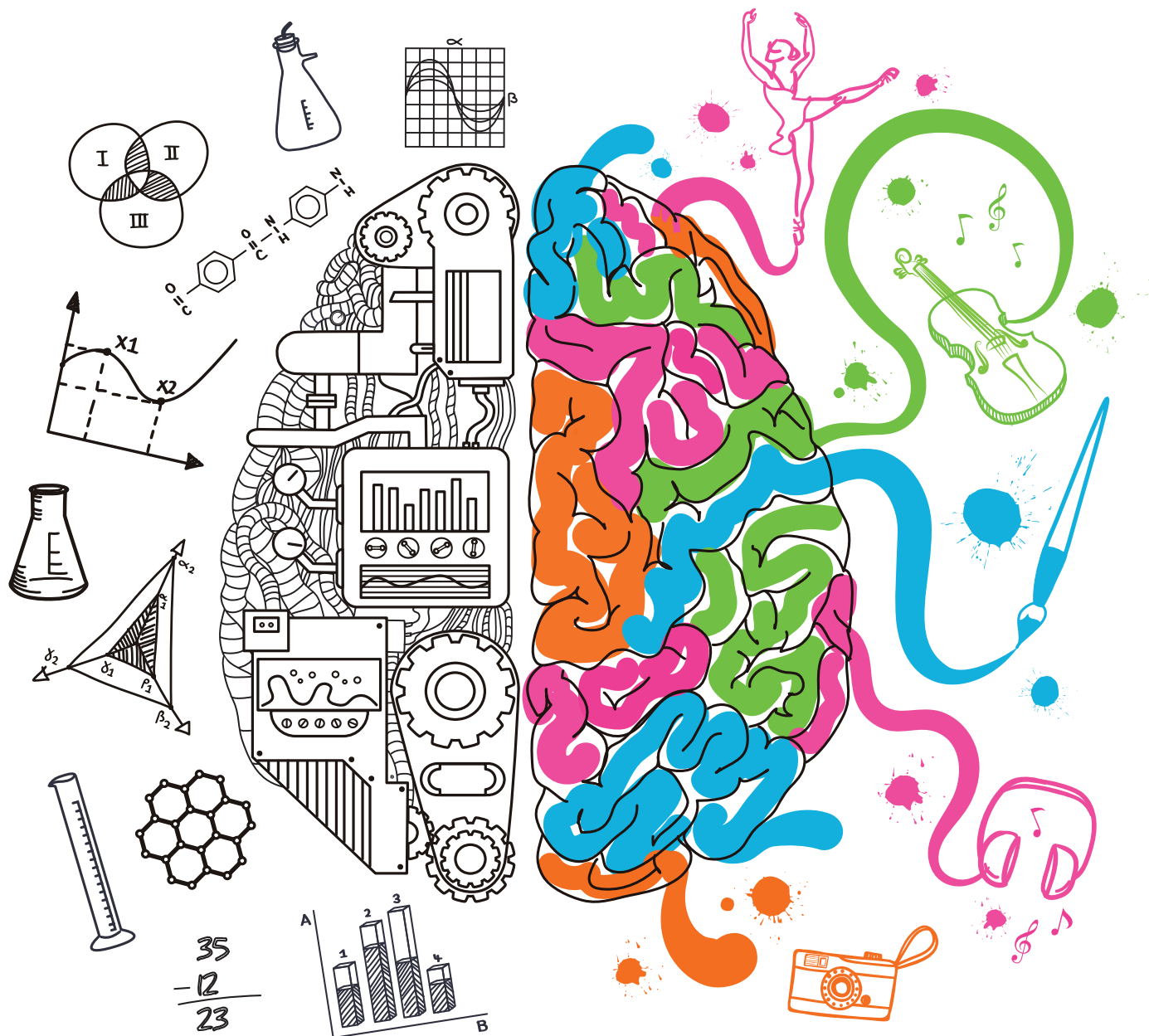


**March 2 and  
March 3, 2018**



**A Showcase of  
Student Discovery  
and Innovation**

# **Eleventh Annual Student Research Symposium**



**Celebrating the achievements of SDSU student research,  
scholarship and creative activity**



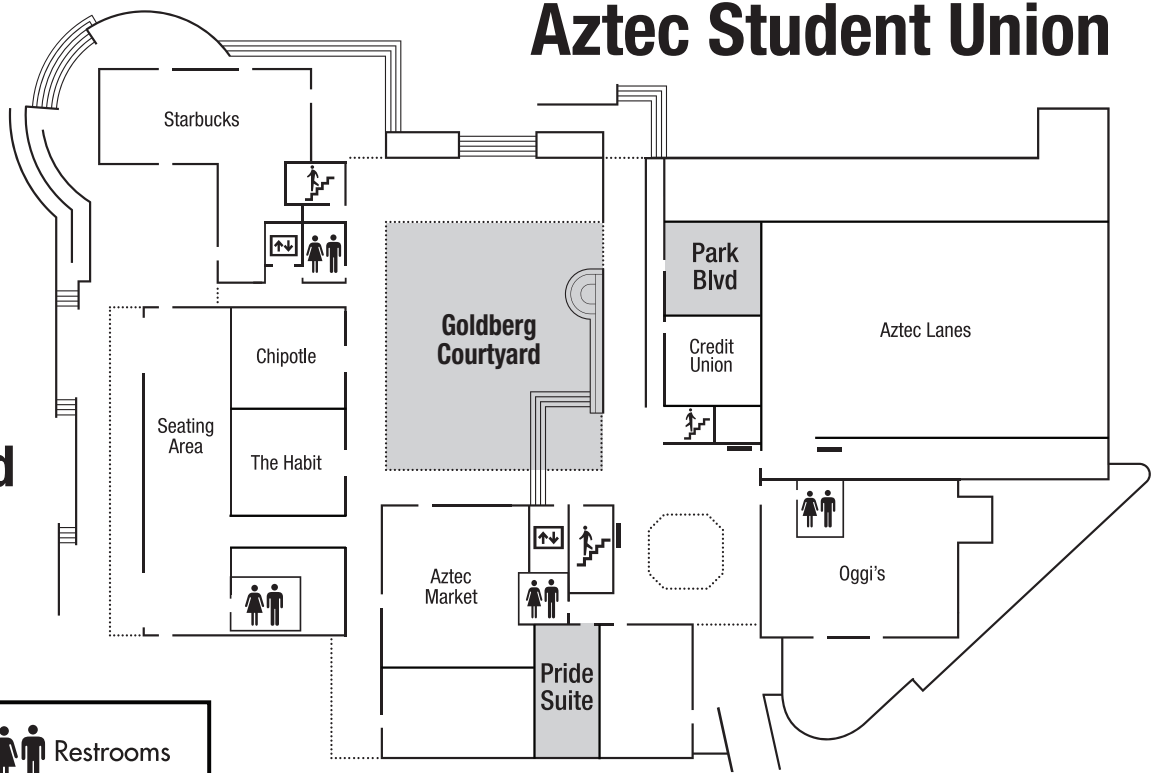
**SAN DIEGO STATE  
UNIVERSITY**

*Leadership Starts Here*

# Aztec Student Union



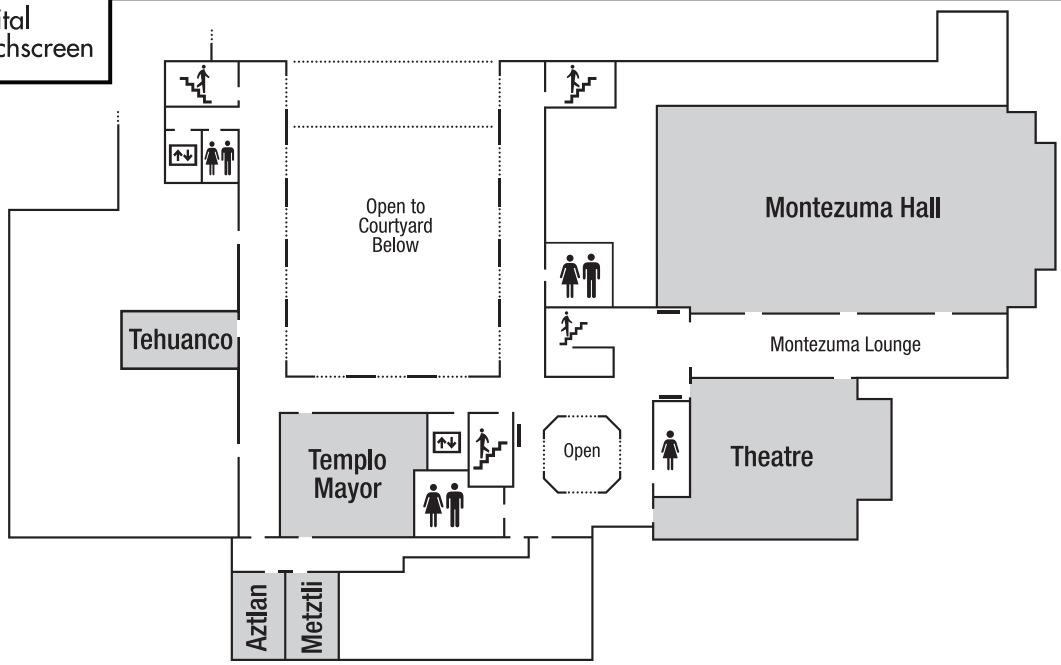
## Ground Level



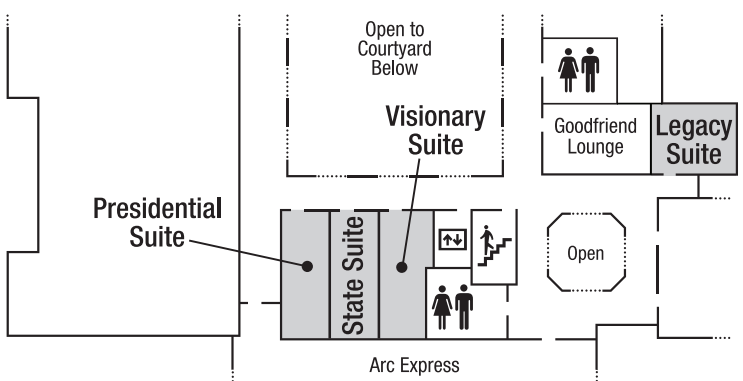
Stairs
 Restrooms

Elevator
 Digital Touchscreen

## 2nd Floor



## 3rd Floor



Gray background indicates rooms being used for Student Research Symposium Sessions.



The PRESIDENT'S  
LEADERSHIP *fund*



SAN DIEGO STATE  
UNIVERSITY  
Division of  
Undergraduate Studies  
University Honors Program



Charles Wei-Issun Fu  
Foundation  
傅偉動



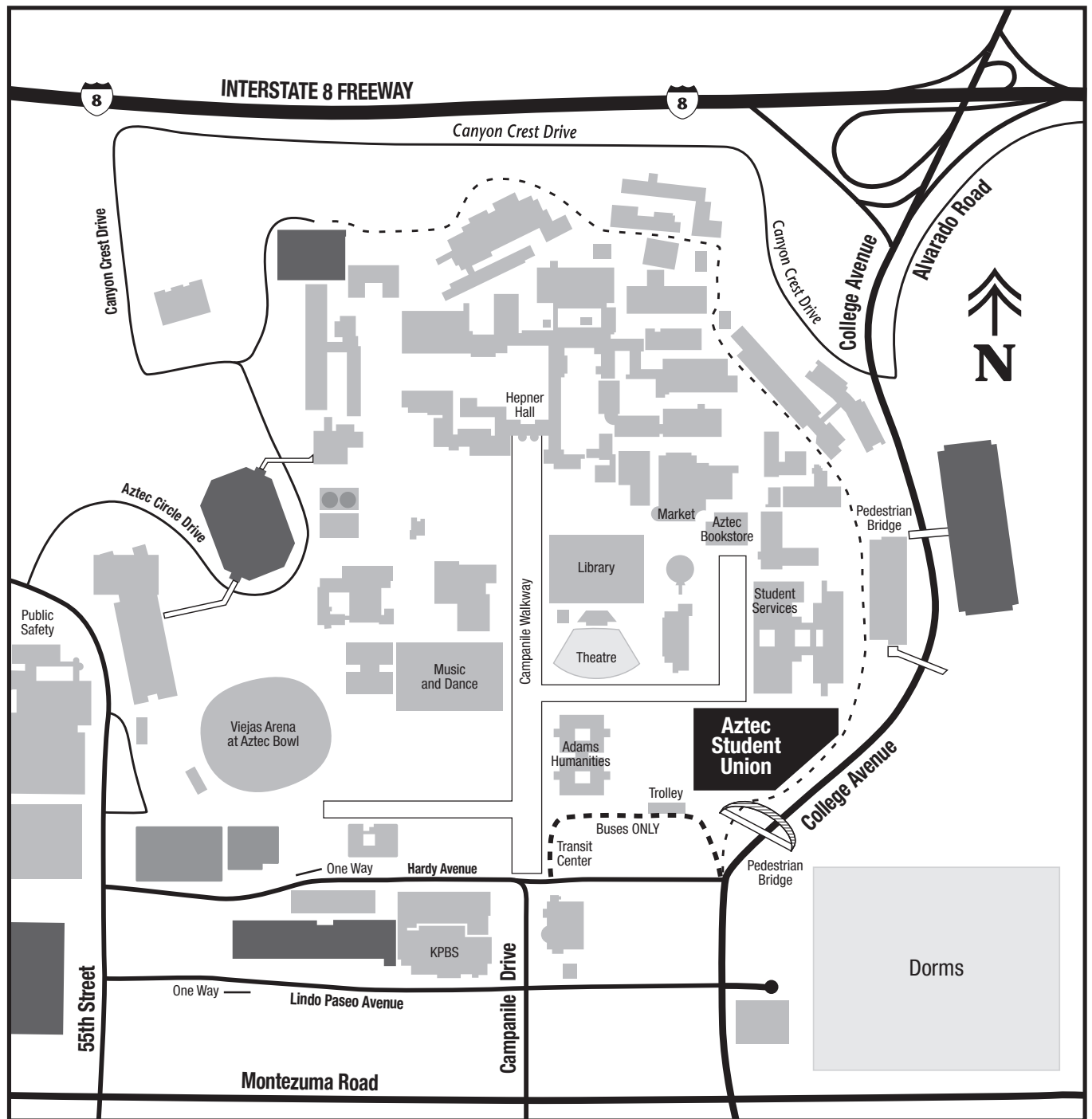
# Eleventh Annual Student Research Symposium

## March 2 and March 3, 2018

Celebrating the achievements of  
San Diego State University students in  
research, scholarship & creative activity



SAN DIEGO STATE  
UNIVERSITY



Map of SDSU Campus.....	2
Welcome from the President.....	4
Keynote Speaker.....	5
Schedule at a Glance.....	6
Awards .....	9
Reception and Awards Ceremony .....	11
<b>Presentations Schedule: Friday</b> .....	13
Session F: Creative and Performing Arts Exhibits .....	14
Session G Creative and Performing Arts Presentations .....	14
Session A: Oral Presentations.....	16
Session B: Oral Presentations.....	19
Session C: Oral Presentations.....	21
Session D: Oral Presentations.....	24
Session H: Oral Presentations.....	27
Session I: Oral Presentations .....	29
Session A: Poster Presentations .....	34
Session B: Poster Presentations .....	37
Session C: Poster Presentations.....	40
Session D: Poster Presentations.....	44
Session E: Poster Presentations .....	47
<b>Presentations Schedule: Saturday</b> .....	27
Session H: Oral Presentations.....	27
Session I: Oral Presentations .....	29
Acknowledgments .....	53
Notes.....	59



**Sally Roush**

President  
San Diego State University

March 2, 2018

Dear colleagues and guests:

Welcome to the 2018 Student Research Symposium at San Diego State University – the 11th year of this university-wide event that highlights the outstanding research and creative endeavors that distinguish SDSU. It is an opportunity to celebrate the innovation, academic scholarship and creativity that our undergraduate and graduate students bring to their research and a forum for sharing their discoveries, insights and performances with a broader audience.

More than 450 students are presenting original work that emerged from academic and creative endeavors across the university. More than 50 awards for excellence will be presented, and 10 students whose entries are judged exceptional will represent SDSU at the annual California State University Student Research Competition in May.

Our dedicated faculty and staff have encouraged students in their research and are coordinating this symposium. More than 200 volunteers from our faculty and staff and the greater San Diego community are sharing their time and expertise to evaluate the oral, poster, exhibit and performance presentations. I am grateful for these efforts, which demonstrate SDSU's commitment to cutting-edge research and creative endeavors.

I know you will enjoy the symposium and the outstanding collaborative work of our students, faculty and staff. This vibrant exploration of ideas defines us as a leading public research university.

With best regards,

Sally Roush  
President



**Dr. Seth Mallios**

Professor of Anthropology,  
Director of the South Coastal  
Information Center,  
San Diego State University

Dr. Seth Mallios is Professor of Anthropology and Director of the South Coastal Information Center at San Diego State University. An archaeologist, anthropologist, and historian, Professor Mallios received his BA from the University of California, Berkeley and his MA and PhD from the University of Virginia. Dr. Mallios previously served as Site Supervisor at the 1607 James Fort archaeological site in Jamestown, Virginia, the first permanent English settlement in the Americas. Since moving to San Diego in 2001, Professor Mallios has spearheaded six research projects:

- The San Diego Gravestone Project,
- The Lost Murals of San Diego State Project,
- The Nate Harrison Historical Archaeology Project,
- The Whaley House Historical Archaeology Project,
- The San Diego Archaeological Geographic Information System, and
- The Historical Archaeology of Local Rock 'n' Roll

He has published nine books, dozens of articles, and garnered nearly \$2 million in over 80 extramural grants, contracts, and awards.

## Thursday, March 1, 2018 - Registration

1:00 pm – 4:00 pm      Registration      Aztec Student Union, Montezuma Lounge

## Friday, March 2, 2018 - Opening Remarks

8:30 am – 9:00 am      Sally Roush, President, SDSU Aztec Student Union, Theatre, Room 270

## Friday, March 2, 2018 - Sessions A & B

8:00 am – 4:00 pm      Registration      Aztec Student Union, Montezuma Lounge

Time	Session Number	Session Type	Session Title	Presentation Location
9:00 am	A-1	Oral	Behavior and Social Sciences 1	Pride Suite
	A-2	Oral	Interdisciplinary 1	Park Boulevard
	A-3	Oral	Visual and Performance Arts 1	Tehuanco
	A-4	Oral	Interdisciplinary 2	Aztlan
	A-5	Oral	Education 1	Metztli
	A-6	Oral	Physical and Mathematical Sciences 1	Templo Mayor
	A-7	Oral	Humanities 1	Visionary Suite
	A-8	Oral	Behavior and Social Sciences 2	Legacy Suite
9:00 am	A-9	Poster	Physical and Mathematical Sciences 2	Montezuma Hall
	A-10	Poster	Health and Nutrition and Clinical Sciences 1	Montezuma Hall
	A-11	Poster	Engineering and Computer Science 1	Montezuma Hall
	A-12	Poster	Biological and Agricultural 1	Montezuma Hall
	A-13	Poster	Behavior and Social Sciences 3	Montezuma Hall
	A-14	Poster	Behavior and Social Sciences 4	Montezuma Hall
	A-15	Poster	Behavior and Social Sciences 5	Montezuma Hall
	A-16	Poster	Physical and Mathematical Sciences 3	Montezuma Hall
11:00 am	A-17	Poster	Interdisciplinary 3	Montezuma Hall
	B-1	Oral	Physical and Mathematical Sciences 4	Pride Suite
	B-2	Oral	Interdisciplinary 4	Park Boulevard
	B-3	Oral	Humanities 2	Tehuanco
	B-4	Oral	Engineering and Computer Science 2	Aztlan
	B-5	Oral	Interdisciplinary 5	Metztli
	B-6	Oral	Humanities 3	Templo Mayor
	B-7	Oral	Behavior and Social Sciences 6	Visionary Suite
10:45 am	B-8	Oral	Biological and Agricultural 2	Legacy Suite
	B-9	Poster	Interdisciplinary 6	Montezuma Hall
	B-10	Poster	Physical and Mathematical Sciences 5	Montezuma Hall
	B-11	Poster	Engineering and Computer Science 3	Montezuma Hall
	B-12	Poster	Biological and Agricultural 3	Montezuma Hall
	B-13	Poster	Interdisciplinary 7	Montezuma Hall
	B-14	Poster	Behavior and Social Sciences 7	Montezuma Hall
	B-15	Poster	Behavior and Social Sciences 8	Montezuma Hall
10:45 am	B-16	Poster	Behavior and Social Sciences 9	Montezuma Hall
	B-17	Poster	Physical and Mathematical Sciences 6	Montezuma Hall



## Friday, March 2, 2018 - Sessions C, D, E, F & G

8:00 am – 4:00 pm      Registration      Aztec Student Union, Montezuma Lounge

Time	Session Number	Session Type	Session Title	Presentation Location
1:00 pm	C-1	Oral	Interdisciplinary 8	Pride Suite
	C-2	Oral	Interdisciplinary 9	Park Boulevard
	C-3	Oral	Biological and Agricultural 4	Tehuanco
	C-4	Oral	Behavior and Social Sciences 10	Aztlan
	C-5	Oral	Humanities 4	Metztli
	C-6	Oral	Engineering and Computer Science 4	Templo Mayor
	C-7	Oral	Behavior and Social Sciences 11	Visionary Suite
	C-8	Oral	Behavior and Social Sciences 12	Legacy Suite
12:30 pm	C-9	Poster	Engineering and Computer Science 5	Montezuma Hall
	C-10	Poster	Engineering and Computer Science 6	Montezuma Hall
	C-11	Poster	Physical and Mathematical Sciences 7	Montezuma Hall
	C-12	Poster	Health and Nutrition and Clinical Sciences 2	Montezuma Hall
	C-13	Poster	Biological and Agricultural 5	Montezuma Hall
	C-14	Poster	Physical and Mathematical Sciences 8	Montezuma Hall
	C-15	Poster	Engineering and Computer Science 8	Montezuma Hall
	C-16	Poster	Interdisciplinary 10	Montezuma Hall
	C-17	Poster	Physical and Mathematical Sciences 9	Montezuma Hall
	C-18	Poster	Biological and Agricultural 6	Montezuma Hall
3:00 pm	D-1	Oral	Physical and Mathematical Sciences 10	Pride Suite
	D-2	Oral	Humanities 5	Park Boulevard
	D-3	Oral	Interdisciplinary 11	Tehuanco
	D-4	Oral	Engineering and Computer Science 9	Aztlan
	D-5	Oral	Physical and Mathematical Sciences 11	Metztli
	D-6	Oral	Behavior and Social Sciences 13	Templo Mayor
	D-7	Oral	Biological and Agricultural 7	Visionary Suite
	D-8	Oral	Behavior and Social Sciences 13	Legacy Suite
2:15 pm	D-9	Poster	Health and Nutrition and Clinical Sciences 3	Montezuma Hall
	D-10	Poster	Biological and Agricultural 8	Montezuma Hall
	D-11	Poster	Behavior and Social Sciences 14	Montezuma Hall
	D-12	Poster	Physical and Mathematical Sciences 12	Montezuma Hall
	D-13	Poster	Behavior and Social Sciences 15	Montezuma Hall
	D-14	Poster	Biological and Agricultural 9	Montezuma Hall
	D-15	Poster	Behavior and Social Sciences 16	Montezuma Hall
	D-16	Poster	Behavior and Social Sciences 17	Montezuma Hall
	D-17	Poster	Interdisciplinary 13	Montezuma Hall
4:00 pm	E-1	Poster	Health and Nutrition and Clinical Sciences 4	Montezuma Hall
	E-2	Poster	Engineering and Computer Science 10	Montezuma Hall
	E-3	Poster	Biological and Agricultural 10	Montezuma Hall
	E-4	Poster	Physical and Mathematical Sciences 13	Montezuma Hall
	E-5	Poster	Behavior and Social Sciences 18	Montezuma Hall
	E-6	Poster	Biological and Agricultural 11	Montezuma Hall
	E-7	Poster	Behavior and Social Sciences 19	Montezuma Hall
	E-8	Poster	Physical and Mathematical Sciences 14	Montezuma Hall
	E-9	Poster	Behavior and Social Sciences 20	Montezuma Hall
	E-10	Poster	Interdisciplinary 14	Montezuma Hall
9:00 am	F-1	Exhibit		Montezuma Hall
1:30 pm	G-1	Performance Arts		Montezuma Theatre

## Saturday, March 3, 2018 - Sessions H & I

8:00 am – 11:00 am Registration Aztec Student Union, Montezuma Lounge

Time	Session Number	Session Type	Session Title	Presentation Location
9:00 am	H01	Oral	Biological and Agricultural 12	Pride Suite
	H02	Oral	Behavior and Social Sciences 20	Park Boulevard
	H03	Oral	Humanities 6	Tehuanco
	H04	Oral	Engineering and Computer Science 11	Aztlan
	H05	Oral	Humanities 7	Metztli
	H06	Oral	Behavior and Social Sciences 21	Templo Mayor
11:00 am	I01	Oral	Engineering and Computer Science 12	Pride Suite
	I02	Oral	Humanities 8	Park Boulevard
	I03	Oral	Behavior and Social Sciences 22	Tehuanco
	I04	Oral	Biological and Agricultural 13	Aztlan
	I05	Oral	Behavior and Social Sciences 23	Metztli
	I06	Oral	Interdisciplinary 15	Templo Mayor

**12:30 pm - 1:30 pm Lunch Reception Goldberg Courtyard**

**2:00 pm - 3:30 pm Keynote and Award Ceremony**

Awards will be presented at the Ceremony on Saturday, March 5, to recognize the most outstanding presentations of research, scholarship, and creative activity at the Student Research Symposium.

The awards are as follows:

### **President's Awards for Research**

President's Awards of \$500 will be given to the ten outstanding presentations in discipline-specific categories. Those receiving a President's Award will represent SDSU at the California State University (CSU) Student Research Competition on May 4-5, 2018 at California State University, Sacramento.

### **President's Award for the Arts**

A President's Award of \$500 will be given to the outstanding presentation in the performance arts or exhibit category.

### **Provost's Awards**

Several Provost's Awards (\$150) for outstanding poster presentations will be selected from all poster entries shown at the Symposium.

### **Dean's Awards**

Dean's Awards of \$250 each will be given for oral presentations. Awards will go to the top presentations in each college. One award will go to the top presentation from the Imperial Valley Campus.

### **The Charles Wei-hsun Fu Foundation Award for Research in Philosophy**

The Charles Wei-hsun Fu Foundation will award \$500 to the best oral presentation in Philosophy.

### **Library Awards**

Several awards from the Library of \$250 each (both undergraduate and graduate) will be given for the best projects using library resources and collections, including, but not limited to, printed resources, databases, primary resources, and materials in all media.

### **Undergraduate Research Excellence Awards**

Several undergraduate research will each receive \$150 in recognition of their scholarly achievement. These students will be selected from both oral and poster presentations.

### **Outstanding Compact Scholar Researcher Award**

\$250 will be awarded to the student with the highest oral or poster presentation score completed by an undergraduate researchers who is also a member of the Compact Scholars Program. Compact Scholar eligibility must be verified before the award is issued.

**Research Awards for Diversity, Inclusion, and Social Justice**

Diversity, social justice, and inclusiveness reflect some of the values at the core of our university mission. Four \$250 awards will be presented jointly by the Chief Diversity Officer, the Division of Graduate and Research Affairs, and the Division of Undergraduate Studies for the two best undergraduate and two best graduate student research presentations that exemplify our ongoing commitment to diversity, inclusion, and social justice.

**Women in Engineering Awards**

Two awards will be given for the two best engineering presentation by women.

**Creative and Performing Arts Awards**

In addition to the President's Award for the Arts, other creative and performing arts awards are under development and will be announced at the event.

**Women in Business Award**

The Fowler College of Business Administration will award \$250 to the top business presentation by a woman.

**Future Business Leader Award**

The Fowler College of Business Administration will award \$250 to the top presentation in business leadership.

**Sustainability Award**

The Center for regional Sustainability will award \$250 to the best sustainability-related presentation.

**A Note About The Awards**

Students receiving one award will not be considered for additional awards unless otherwise specified.

**Saturday, March 3, 2018**

**Reception:**

12:00 pm – 1:30 pm, Aztec Student Union, Goldberg Courtyard

**Keynote Address and Awards Ceremony:**

2:00 – 3:00 pm, Aztec Student Union, Montezuma Hall

Saturday afternoon events are open to all student presenters, mentors, and judges.

**Awards Ceremony 2018 Student Research Symposium**

---

**Welcome**

**Keynote Address**

**Awards\***

Undergraduate Research Excellence Awards

Research Awards for Diversity, Inclusion and Social Justice

Philosophy Award

Library Awards

Sustainability Award

Women in Engineering Awards

Awards for Outstanding Creative & Performing Arts

Women in Business Award

Future Business Leader Award

Deans Awards

Provost's Awards

President's Awards

**Closing Remarks**

\* Photos will be taken of each recipient as they receive the award.

Group photos will be taken immediately after the ceremony.

Recipients are encouraged to stay for group photos.





## **Creative Arts Exhibits and Presentations**

**Friday, March 2, 2018**

---

**Sessions F and G**

Poster presenters are required to stand by their poster during the entire 1-hour and 30 minute discussion period. Each oral presentation is allotted 10 minutes followed by a 5-minute question and answer period. Participants and guests are asked to enter or leave the rooms only between presentations.



**SAN DIEGO STATE  
UNIVERSITY**

Please silence your cell phones and other devices.

(U) = Undergraduate; (M) = Masters; (D) = Doctoral

## Friday, March 2, 2018 Session F: Creative Arts Exhibits

### Session F-1

Exhibit 1

**Friday, March 2, 2018, 9:00 am**

Location: Montezuma Hall

#### 549 9:00 am

Microbial Jewelry: Reevaluating Curative  
Medical Materials as Aesthetic Adornment  
**Kelly Temple, Masters of Fine Art (M)**

#### 550 9:00 am

Digital Fiction. Working Title: Surface  
**Tina Lumbis, Master in Fine Arts,  
Creative Writing - Fiction (M)**

#### 551 9:00 am

Chronicles Of A Browned Skinned Girl  
**Theresa Palafox, Multicultural Community  
Counseling and Social Justice (M)**

## Friday, March 2, 2018 Session G: Creative Arts Presentations

### Session G-1

Performance Arts Performance Arts 1

**Friday, March 2, 2018, 1:30 pm**

Location: Montezuma Theater

#### 552 1:30 pm

"My Name is Stubbins": A Children's Book  
about Sense of Identity, Separation, and Search  
**Sean Coolican, Master of Fine Arts,  
Creative Writing Fiction (M)**

#### 553 1:50 pm

There Goes War Like a Dream of Love:  
Directing Trojan Incident in 2018 America  
**David Watson, Musical Theatre (M)**

#### 114 2:10 pm

Floss your Nerves: The Back-Line Posterior  
Chain in Belting  
**Kimberly Moller, Musical Theatre  
Performance (M)**





## **Oral Presentations**

**Friday, March 2, 2018**

---

**Sessions A, B, C and D**

**Saturday, March 3, 2018**

---

**Sessions H and I**

Poster presenters are required to stand by their poster during the entire 1-hour and 30 minute discussion period. Each oral presentation is allotted 10 minutes followed by a 5-minute question and answer period. Participants and guests are asked to enter or leave the rooms only between presentations.



**SAN DIEGO STATE  
UNIVERSITY**

Please silence your cell phones and other devices.

(U) = Undergraduate; (M) = Masters; (D) = Doctoral

## Friday, March 2, 2018

### Session A: Oral Presentations

#### Session A-1

Oral Behavior and Social Sciences 1

**Friday, March 2, 2018, 9:00 am**

Location: Pride Suite

- 100 9:00 am**  
What factors are associated with good oral hygiene among Mexican migrant adolescents?  
**Haileigh Smith, Public Health (U)**
- 101 9:15 am**  
What factors are associated with psychological distress among Mexican migrant adolescents?  
**Kylie Carolino, Public Health (U)**
- 102 9:30 am**  
The association of awareness of legal rights to language services and access to timely health care in California  
**Emily Brown, Public Health - Social Work (M)**
- 103 9:45 am**  
Provider-Patient Interactions in Latino Children's Pediatric Primary Care  
**Alma Behar, Public Health (D)**
- 104 10:00 am**  
Extra-familial social factors and obesity in the Hispanic Community Children's Health Study/ Study of Latino Youth  
**Julia Bravin, Clinical Psychology (D)**
- 105 10:15 am**  
The Gender Composition of Injection Drug Use Initiator-Initiate Relationships across Three North American Settings: A Mixed Methods Study  
**Stephanie Meyers, Interdisciplinary Research on Substance Use (D)**

#### Session A-2

Oral Interdisciplinary 1

**Friday, March 2, 2018, 9:00 am**

Location: Park Boulevard

- 106 9:00 am**  
Financial Impact of Cyber Security Breaches on Stock Holders  
**Dhaha Nur, Management Information Systems (U)**
- 107 9:15 am**  
Consulting Project for IQ Graphics  
**Jeremiah Taylor, Business Administration, Real Estate (U)**
- 108 9:30 am**  
Turn Your Research Paper into a Graphic Novel: Multimedia Platforms and Education  
**Ana Aguila, Master of Arts in Liberal Arts & Sciences (M)**
- 109 9:45 am**  
Applications of in-Situ Fluorescence Sensors for Tracking Wastewater Inputs to Surface Waters  
**Lorelay Mendoza, Environmental Engineering (U)**
- 110 10:00 am**  
Transforming Healthcare Through the Internet of Things and Artificial Intelligence  
**Lambert Ninteman, Computer Science (M)**
- 111 10:15 am**  
Body Enrichment  
**Andrea Roberts, Business Management with Specialization in Entrepreneurship (U)**

#### Session A-3

Oral Visual and Performance Arts 1

**Friday, March 2, 2018, 9:00 am**

Location: Tehuanco

- 112 9:00 am**  
Black Rope  
**Oliver Sage Foley, English (U)**
- 113 9:15 am**  
Shakespeare as a Guest on the Japanese Stage: Pop Culture, Performance, and the Takarazuka Revue  
**Yi-Lin Chung, Theatre Arts (M)**

- 115 9:45 am**  
 “Performativity and the Music and Stage Performances of David Bowie, 1972–1974”  
**Andrew Bearden, Choral Conducting (M)**

- 116 10:00 am**  
 The Relationship between Musical and Spoken Pitch on Brain Processes: Optimizing Music Pedagogy through Science  
**Kenny Tsao, Music Performance (M)**

## Session A-4

Oral Interdisciplinary 2

**Friday, March 2, 2018, 9:00 am**

Location: Aztlan

- 117 9:00 am**  
 Analysis of Deep Brain Signals  
**Susan Deeb, Applied Mathematics (M)**
- 118 9:15 am**  
 HIV/AIDS and Gender-Based Violence in Contemporary Zambia  
**Chase Whittaker, Public Health and Political Science (U)**
- 119 9:30 am**  
 The CSU's Perspective on Food Insecurity  
**Valeria Ramirez, Public Administration and Latin American Studies (M)**
- 120 9:45 am**  
 Farmer Adaptations to Water Availability Dynamics in the Mexicali Valley  
**Joel Kramer, Geography, Watershed Science (M)**
- 121 10:00 am**  
 3D Visualisation of Human Brain  
**Yogesh Kohli, Computer Science (M)**
- 122 10:15 am**  
 Collegiate Gaming Communities (CGCs)  
**Kevin Garrie, Postsecondary Educational Leadership - Student Affairs (M)**

## Session A-5

Oral Education 1

**Friday, March 2, 2018, 9:00 am**

Location: Metztli

- 123 9:00 am**  
 Persisting in Community College: Latinos and their motivation to succeed  
**Anthony Mota, Communication (U)**
- 124 9:15 am**  
 PRISM: Promoting Representation in STEM Majors  
**Vanessa Reynolds, International Business with an emphasis on France and Western Europe (U)**
- 125 9:30 am**  
 Men of Colour at Community College: Using Film Based Ethnographies to Visualise Student Experiences  
**Polly Card, Education (D)**
- 126 9:45 am**  
 Phenomenological Perspective of Middle Eastern & Central Asian Female Immigrants in Community College  
**Hossna Sadat, Educational Leadership (D)**
- 127 10:00 am**  
 Queer Students in STEM: The Voices of Amber, Charles, Jenny and Juan  
**Matthew Voigt, Mathematics and Science Education (D)**

## Session A-6

Oral Physical and Mathematical Sciences 1

**Friday, March 2, 2018, 9:00 am**

Location: Templo Mayor

- 128 9:00 am**  
 Computational Analysis of C<sub>4</sub>H<sub>3</sub> Radical Isomers and its Reactions with CO, HCN, and C<sub>2</sub>H<sub>4</sub>  
**Jade Johnson, Chemistry (U)**
- 129 9:15 am**  
 Spin Conical Intersections and High-Spin Stability in Small Hydrocarbons  
**Harrison Pearce, Chemical Physics (U)**
- 130 9:30 am**  
 Quantification of Metal Complexation Capacity by a Fertilizing Humic Substance  
**Jaclyn Pittman, Environmental Sciences (U)**

Please silence your cell phones and other devices.

(U) = Undergraduate; (M) = Masters; (D) = Doctoral

### 131 9:45 am

Enhancement of Silicon Solar Cells via the Attachment of Silver Nanoparticles  
**Martha Zepeda Torres, Chemistry (D)**

### 132 10:00 am

Self-sustaining Microbial Photoelectrosynthesis for Fuel Generation and Waste Water Cleaning!  
**Nicholas Williams, Chemistry (D)**

## Session A-7

Oral Humanities 1

**Friday, March 2, 2018, 9:00 am**

Location: Visionary Suite

### 133 9:00 am

Deconstructing the Pillars of Memory: Gender, Memory and the Rwandan Genocide  
**Joshua Melendez, History (M)**

### 134 9:15 am

Identification by Transitive Property: Intermediated Consubstantiality in the NFL's Salute to Service Campaign  
**Eli Mangold, Communication (M)**

### 135 9:30 am

Changes in the Bay: Topics of Police Brutality in the Bay Area  
**Ricardo Scheller, History (M)**

### 136 9:45 am

Sputnik: A Shock to U.S. Diplomatic Efforts  
**Stephen Dichiera, History (M)**

### 137 10:00 am

The Committee of Correspondence: Women in American Politics and International Relations, 1952-1969  
**Amanda Schumaker, History (M)**

### 138 10:15 am

Nerves of Steel in the Apocalypse: The changing roles of polygamous women in an end times crisis  
**Stephanie Griswold, History (M)**

### 139 10:30 am

Si Dios Quiere...Y Sí No Quiere También. If God Wants... and If He Doesn't Too.  
**Zoraida Payne, History (M)**

## Session A-8

Oral Behavior and Social Sciences 2

**Friday, March 2, 2018, 9:00 am**

Location: Legacy Suite

### 140 9:00 am

Reducing Skin Cancer Risk Behaviors via Facial Morphing  
**Manuel Gonzales, Psychology (U)**

### 141 9:15 am

Prevalence and Predictors of Body Dysmorphic Disorder Among Gay and Bisexual Males  
**Adoril Oshana, Industrial and Organizational Psychology (U)**

### 142 9:30 am

Body Image Disturbance as Mechanism of Change in Cognitive Behavioral Therapy for Body Image and Self-Care on ART Adherence among Sexual Minority Men Living with HIV  
**Kelsey Nogg, Psychology (M)**

### 143 9:45 am

The Association between Religiosity and Health Risk Behaviors among Latino Sexual Minority Men  
**Kalina Lamb, Psychology (M)**

### 144 10:00 am

Appearance Concerns and Lung Cancer Risk among Sexual Minority Latino Men  
**Kaitlin Rozzell, Psychology (M)**

### 145 10:15 am

Appearance Investment, Appearance Evaluation, and Sexual Risk among Latino Sexual Minority Men  
**John Brady, Clinical Psychology (D)**

# Friday, March 2, 2018

## Session B: Oral Presentations

### Session B-1

Oral Physical and Mathematical Sciences 4

**Friday, March 2, 2018, 11:00 am**

Location: Pride Suite

- 195 11:00 am**  
A VLT/FORS2 Narrowband Imaging Search for MgII Emission Around  $z \sim 0.7$  Galaxies  
**Ryan Rickards Vaught, Astronomy (M)**
- 196 11:15 am**  
Precisely Determining the Age of the Star Cluster NGC 752 Using an Eclipsing Binary  
**Andrew Buckner, Astronomy (U)**
- 197 11:30 am**  
Testing a "Red Nova" Hypothesis with Vulcan Data  
**Quentin Socia, Astronomy (M)**
- 198 11:45 am**  
Late-Holocene Earthquakes on the Rose Canyon Fault at Old Town-San Diego, CA  
**Drake Singleton, Geophysics (D)**
- 199 12:00 pm**  
Kinematic analysis of Neogene and Quaternary faults in the Santa Rosalia Basin along the margin of the Gulf of California, Baja California Sur, Mexico  
**Luke Johnson, Geology (U)**
- 200 12:15 pm**  
Measuring late Quaternary uplift rates of marine terraces using high-resolution Chirp sub-bottom data, Northern Channel Islands, California, USA  
**Alexander Laws, Geological Sciences (M)**

### Session B-2

Oral Interdisciplinary 4

**Friday, March 2, 2018, 11:00 am**

Location: Park Boulevard

- 201 11:00 am**  
Military Transition Expectations Pertaining to Education  
**Colin McCarthy, Psychology (U)**

- 202 11:15 am**  
An Exploration of Colormuteness in Genders and Sexualities Alliances (GSAs) in Massachusetts High Schools  
**Amanda Pham, Public Health (M)**
- 203 11:30 am**  
Kânaka Maoli in Higher Education  
**Bree Kalima, Postsecondary Educational Leadership - Student Affairs (M)**
- 204 11:45 am**  
Exploring Systemic Factors of White Spaces Within Education Institutions and the Role of the School Counselor  
**Heidi van Mastrigt, Counseling (M)**
- 205 12:00 pm**  
Equitable educational opportunities for system impacted Latino males  
**Melissa Abeyta, Education - Community College Leadership (D)**
- 206 12:15 pm**  
Early Childhood Plays: The Impact of Microaggressions on Black Children  
**Darielle Blevins, Education (D)**

### Session B-3

Oral Humanities 2

**Friday, March 2, 2018, 11:00 am**

Location: Tehuanco

- 207 11:00 am**  
This Body is (Not) Mine: Social Dependency of Identity and Autonomy  
**Samuel Padilla, Philosophy (U)**
- 208 11:30 am**  
The Termination Thesis: Is the corpse left behind after death still you?  
**Tawny Whaley, Philosophy/Psychology (U)**
- 209 11:45 am**  
Foundations of Cognitive States  
**Jake Manalansan, Philosophy (M)**
- 210 12:00 pm**  
Indigenous groups in Mexican newspapers: Recurrent themes and word associations  
**Julia Vasquez, Spanish (M)**

Please silence your cell phones and other devices.

(U) = Undergraduate; (M) = Masters; (D) = Doctoral

- 211 12:15 pm**  
 “Film as Analogous to Dream”:  
 Susanne K. Langer’s Philosophy of Film  
**Sean Tracy, Philosophy (M)**

- 212 11:15 am**  
 Exploring Cultural Identity Construction and  
 Language Practice(s) of Asian Americans  
**Wonyoung Cho, Education (D)**

## Session B-4

Oral Engineering and Computer Science 2

**Friday, March 2, 2018, 11:00 am**

Location: Aztlan

- 213 11:00 am**  
 Chrysalis Science: Skin Cancer Prevention and  
 Detection  
**Allison Langley, Computer Engineering (U)**
- 214 11:15 am**  
 Analytical tool to efficiently compare metagenome  
 sequences  
**Byron Garcia, Computer Science (U)**
- 215 11:30 am**  
 Characterization of low-velocity impact damage  
 in sandwich panels  
**Adrian Rivera, Aerospace Engineering (U)**
- 216 11:45 am**  
 Optimization of Solar Tower Receiver  
**Philip Hoskinson, Mechanical Engineering (M)**
- 217 12:00 pm**  
 Graph Inference Method for finding Cortical  
 Connectivity in Primates using ECoG Signals  
**Siddhi Tavildar, Computational Science (D)**

## Session B-5

Oral Interdisciplinary 5

**Friday, March 2, 2018, 11:00 am**

Location: Metztli

- 218 11:00 am**  
 Effect of Metamorphosis on Nutrient Composition  
 of Edible Insects  
**Diana Laura Vergara Rodriguez, Food Science &  
 Nutrition (U)**

- 219 11:15 am**  
 Toys for Diversity: Intersectional Dolls and  
 Narratives Highlighting the LGBTQIA+ Perspective  
 of Early Gender Education  
**Evelyn Puga, Communication (U)**

- 220 11:30 am**  
 Effects of Psychology Knowledge on Auditory  
 Hindsight Bias  
**Ian Martindale, Psychology (U)**

- 221 11:45 am**  
 Fitbit Charge HR VO2 Max Validation Study  
**Katharine Dizaye, Nutritional Science and  
 Exercise Physiology (M)**

- 222 12:00 pm**  
 Acrophobic? Let’s walk the plank  
**Mason Hearn, Physical Therapy (D)**

- 223 12:15 pm**  
 Heritage Language Development in  
 Spanish-Speaking Toddlers: Identifying Early  
 Predictors  
**Cristy Sotomayor, Language and  
 Communicative Disorders (D)**

## Session B-6

Oral Humanities 3

**Friday, March 2, 2018, 11:00 am**

Location: Templo Mayor

- 224 11:00 am**  
 Calculating Consistency  
**Kyle Foley, Philosophy (M)**
- 225 11:15 am**  
 Why must the Philosopher King be  
 Compelled to Rule?  
**Kayla Beard, Philosophy (U)**
- 226 11:30 am**  
 The Conception of Theoria  
**Ashley Sears, Philosophy (U)**
- 227 11:45 pm**  
 sôphrosynê  
**Adam Crawley, Philosophy (M)**
- 228 12:00 pm**  
 Spinoza: an ethics of logic  
**Rutger Hadge, Philosophy (M)**

- 229 12:15 pm**  
The Distinction Between Plato and Aristotle's  
Bipartition of the Soul  
**Tiffany Harrington, Philosophy (M)**

## Session B-7

Oral Behavior and Social Sciences 6

**Friday, March 2, 2018, 11:00 am**

Location: Visionary Suite

- 328 11:00 am**  
Application of the UN-Toolkit to Shape Climate  
Mitigation and Adaptation Strategies in Lemon  
Grove, CA, USA  
**Victoria Lawless, Public Health (U)**
- 231 11:15 am**  
Welcome to my pity party: Stigma surrounding  
juvenile delinquents and their mothers  
**Briana Magallanes, Psychology (U)**
- 232 11:30 am**  
Identify formation, engagement, and access to  
support in HIV care among women living with  
HIV/AIDS  
**Briana Thrift, Master of Public Health -  
Epidemiology (M)**
- 233 11:45 am**  
Pre-Post Change in Knowledge about HIV  
Care among Family Medicine Residents  
Participating in an Educational Rotation  
**Daniel Chambers, Health Management & Policy (M)**
- 234 12:00 pm**  
Effects of Sleep Quality on Cognitive Function  
in HIV+ and HIV- Adults  
**Zanjbeel Mahmood, Clinical Psychology -  
Neuropsychology (D)**

## Session B-8

Oral Biological and Agricultural 2

**Friday, March 2, 2018, 11:00 am**

Location: Legacy Suite

- 235 11:00 am**  
An F-box leucine-rich repeat-2 homolog is  
essential for stem cell proliferation in the planarian  
*Schmidtea mediterranea*  
**Celeste Romero, Cellular - Molecular Biology (U)**

- 236 11:15 am**  
Analyzing the Evolution, in Humans, of  
crAssphage: A Highly Abundant Bacteriophage  
Found Around the Globe  
**Holly Norman, Microbiology-Clinical Laboratory  
Science and Public Health (U)**

- 237 11:30 am**  
Competition between two dominant Southern  
California salt marsh plants  
**Gabriel Greenberg-Pines, Biology (U)**

- 238 11:45 am**  
The use of signature genes and motifs to  
improve annotations of viruses  
**Dnyanada Pande, Bioinformatics - Medical  
Informatics (M)**

- 239 12:00 pm**  
Machine Learning Approach: Estimating Abundance  
of a Viral Bacteriophage Family in Metagenomes  
**Beverly Hom, Bioinformatics (M)**

- 240 12:15 pm**  
Unraveling metabolism network models of  
kelp-associated bacteria  
**Daniel Cuevas, Computational Science (D)**

## Friday, March 2, 2018 Session C: Oral Presentations

### Session C-1

Oral Interdisciplinary 8

**Friday, March 2, 2018, 1:00 pm**

Location: Pride Suite

- 292 1:00 pm**  
The design of new antibacterial drugs against  
GTP cyclohydrolase IB (GCYH-IB)  
**George Samaan, Chemistry (D)**
- 293 1:15 pm**  
Discovery Of Potent Nucleoside Analogue  
Prodrug Targeting the RNA-Dependent RNA  
Polymerase of the Zika Virus  
**Michael Coste, Organic Chemistry (D)**



Please silence your cell phones and other devices.

(U) = Undergraduate; (M) = Masters; (D) = Doctoral

- 294 1:30 pm**  
Synthesis of New HCV IRES Ligands  
**Kevin Walsworth, Chemistry (D)**
- 295 1:45 pm**  
Structural Optimization of RET Kinase Inhibitors  
**Sean Toenjes, Chemistry (D)**
- 296 2:00 pm**  
Characterization of the Receptor Tyrosine Kinase Tie2  
**Madison Kennedy, Biochemistry (U)**

## Session C-2

Oral Interdisciplinary 9

**Friday, March 2, 2018, 1:00 pm**

Location: Park Boulevard

- 297 1:00 pm**  
Combined Alcohol and Cannabinoid Exposure during late Gestation Alters Motor Coordination in Rats  
**Ivette Gonzalez, Psychology (U)**
- 298 1:15 pm**  
LGBT Usage  
**Mikayla Borchin, Public Health (U)**
- 299 1:30 pm**  
Neural Correlates of Response Inhibition and Error Processing in Binge Drinkers  
**Austin Alderson Myers, Psychology (M)**
- 300 1:45 pm**  
Exploratory Study of Stigma as a Predictor of Poor Patient Communication Among Binational HIV-Positive Latinos in the U.S.-Mexico Border Region  
**Victor Magana, Interdisciplinary Research on Substance Use (D)**
- 301 2:15 pm**  
Alcohol-Related Social Media Data as a Proxy for Alcohol Consumption Behaviors in San Diego  
**Charles Marks, Interdisciplinary Research on Substance Use (D)**
- 302 2:30 pm**  
It is hard to hold your horses when drunk: Modulation of neural oscillatory dynamics of response inhibition by alcohol and dopamine availability  
**Joseph Happer, Clinical Psychology (D)**

## Session C-3

Oral Biological and Agricultural 4

**Friday, March 2, 2018, 1:00 pm**

Location: Tehuanco

- 303 1:00 pm**  
Characterizing 2C10: An Anti-Double Stranded DNA Antibody  
**Citlayi Villaseñor, Biochemistry (U)**
- 304 1:15 pm**  
SNAPc Interacts with Bdp1 to Establish a Stable Protein-DNA Complex with TBP on a U6 snRNA Gene Promoter  
**Angela Wolfe, Biochemistry (U)**
- 305 1:30 pm**  
Probing UNC-45:Hsp83 protein interactions in vitro  
**Sara Torres Robles, Chemistry - Biochemistry (U)**
- 306 1:45 pm**  
The Role of pH and Reductive Carboxylation in IDH Driven Cancers  
**Adam Gruneth, Biochemistry (M)**
- 307 2:00 pm**  
Expression And Purification Of The Antigen Binding Fragment Of The Genomically-encoded Precursor to the Murine Anti-sphingosine-1-phosphate Metalloantibody Antibody In E. coli and Insect Cells  
**Elinaz Farokhi, Chemistry (D)**

## Session C-4

Oral Behavior and Social Sciences 10

**Friday, March 2, 2018, 1:00 pm**

Location: Aztlan

- 308 1:00 pm**  
Rohingyan Women's Experience as Refugees  
**Doreann Wiley, International Security and Conflict Resolution (U)**
- 309 1:15 pm**  
Lost Promise: The AKP, Erdogan and the decline of the Turkish Democracy  
**Mustafa Alemi, Political Science (U)**



- 310 1:30 pm**  
The Impact of the 2016 Presidential Election on Discussions of Race, Ethnicity, and Immigration in High School Genders and Sexualities Alliances  
**Caitlyn Downing, Sociology & Lesbian, Gay, Bisexual, and Transgender Studies (U)**

- 311 1:45 pm**  
Peril at the Polls: Examining the Impact of Women's Groups on Mitigating Electoral Violence in Senegal  
**Madelyn Hughes, Sociology/Political Science (U)**

- 312 2:00 pm**  
The Intersection of Gender and Campaign Finance in Local Elections  
**Rose Rastbaf, Political Science, History (U)**

- 313 2:15 pm**  
An Analysis of Langa, Cape Town's Representation by Local Newspapers  
**Chelsey Crowne, Journalism (U)**

## Session C-5

Oral Humanities 4

**Friday, March 2, 2018, 1:00 pm**

Location: Metztli

- 314 1:00 pm**  
Roman Empire: Fall or Transformation  
**Declan Krebs, History (U)**
- 315 1:15 pm**  
The Transformation of the Roman Empire  
**Hamid Kolahdouz-Isfahani, History (U)**
- 316 1:30 pm**  
Christianity and the Fall of the Roman Empire  
**Sohel Bahjat, History (U)**
- 317 1:45 pm**  
A portrait of Ireland as The Sean-Bhean Bhocht  
**Jordan Rafferty, English Literature (U)**

- 318 2:00 pm**  
Viking Houses, Romanesque Churches, and Gothic Towers: Contemporary Ideas of the Middle Ages Seen Through the Architecture in The Lord of the Rings  
**Katie Waltman, History (M)**

- 319 2:15 pm**  
"I should have been born a man": The Paradox of Female Power in HBO's Game of Thrones  
**Aditi Joshi, History (M)**

## Session C-6

Oral Engineering and Computer Science 4

**Friday, March 2, 2018, 1:00 pm**

Location: Templo Mayor

- 320 1:00 pm**  
A Magnetoresistive Sensor Array for Nonintrusive Power Consumption Monitoring  
**Shane Witsell, Electrical Engineering (U)**
- 321 1:15 pm**  
Cancer Stem Cell Separation by Immunohistochemical Methods in Microfluidics Platform  
**Chuka Esiobu, Bioengineering (M)**
- 322 1:30 pm**  
Rare Cell Trapping using Microfluidics Platform with Integrated Micro-vortex and Size Exclusion Features  
**Ygnacio Rodriguez, Bengineering (M)**
- 323 1:45 pm**  
Design and Fabrication of Microfluidic Platform for Cell separation by Acoustophoresis  
**William Millar, Mechanical Engineerin (M)**
- 324 2:00 pm**  
A quantitative assessment of S/D ratio for the detection of LVAD pump thrombus in a mock circulatory loop  
**Ricardo Montes, Bioengineering - Biomechanics (M)**
- 325 2:15 pm**  
The interaction of cardiac geometry and LVAD inflow cannula diameter on the flow dynamics of the LVAD-assisted heart  
**Saniya Salim, Bioengineering (M)**

Please silence your cell phones and other devices.

(U) = Undergraduate; (M) = Masters; (D) = Doctoral

## Session C-7

Oral Behavior and Social Sciences 11

**Friday, March 2, 2018, 1:00 pm**

Location: Visionary Suite

- 326 1:00 pm**  
Indoor Air Nicotine in a Casino Pre and Post Smoking Ban  
**Victoria Flores, Environmental Division (M)**
- 327 1:15 pm**  
Early Life Adversity and Access to Specialty Care  
**Brittnie Bloom, Global Public Health (D)**
- 230 1:30 pm**  
The Not So Trivial Pursuit of Trivia Night: An Ethnographic Study of Performing Competition  
**Laura Horton, Communication (U)**
- 329 1:45 pm**  
Language growth predicts executive function in low SES bilingual children  
**Jonathan Robinson Anthony, Language & Communicative Disorders (D)**
- 330 2:00 pm**  
The importance of porphyrin antennae in blue light bacterial suppression  
**Brianna Morrow, Psychology (U)**
- 331 2:15 pm**  
Comparing Spontaneous and Task-related Neural Oscillations in Young Adult Binge Drinkers  
**Rifqi Affan, Psychology (U)**

## Session C-8

Oral Behavior and Social Sciences 12

**Friday, March 2, 2018, 1:00 pm**

Location: Legacy Suite

- 332 1:00 pm**  
Associations between Urban-Rural Environment in Early Adulthood and Cognitive Ability in Late Midlife  
**Asad Beck, Psychology (U)**
- 333 1:15 pm**  
Association of Depressive and Anxiety Symptoms with Poor Oral Health Status Among a Community Sample of Adult Dental Patients  
**Sarah Porras, Social Work - Public Health (M)**

## 334 1:30 pm

A Social Ecological Analysis of the Intersection between Food Insecurity and Eating Pathology  
**Elizabeth Harris, Social Work & Public Health (M)**

## 335 1:45 pm

Low-frequency oscillations in postural sway scale with dual tasking and fall-risk in older adults.  
**Hedaya Rizeq, Kinesiology, Applied Movement Sciences (M)**

## 336 2:00 pm

Worry & Odor Memory in Apolipoprotein-ε4 Carriers  
**Jacquelyn Szajer, Clinical Psychology (D)**

## Friday, March 2, 2018 Session D: Oral Presentations

### Session D-1

Oral Physical and Mathematical Sciences 10

**Friday, March 2, 2018, 3:00 pm**

Location: Pride Suite

- 392 3:00 pm**  
An Alkylative Atroposelective Dynamic Kinetic Resolution of Diaryl Ether Naphthoquinones  
**Andrew Dinh, Chemistry (D)**
- 393 3:15 pm**  
Atroposelective Dynamic Kinetic Resolution of Aryl-Naphthoquinones  
**Sean Maddox, Organic Chemistry (D)**
- 394 3:30 pm**  
Studying the Fundamental Nature of Stereoselective VMAR's for Improving the Construction of Complex Natural Products  
**Monny Singh, Chemistry (D)**
- 395 3:45 pm**  
Bifunctional Ligands in Organometallic Catalysis  
**Braden Silva, Chemistry (D)**
- 396 4:00 pm**  
Mechanically Induced pyrogallol[4]arene Hexamer Assembly in the Solid State  
**Cesar Garcia, Chemistry (U)**

## Session D-2

Oral Humanities 5

**Friday, March 2, 2018, 3:00 pm**

Location: Park Boulevard

- 397 3:00 pm**  
The W.I.T.C.Hing Hour  
**Jade Connolly-Cepurac, History - Political Science (U)**
- 398 3:15 pm**  
Medusa's Laughter  
**Mary "Katie" Chestnut, English (U)**
- 399 3:30 pm**  
Networks of Power: Diversity Programming and Depictions of the Black Family in New Millennial Television  
**John Gove, History (M)**
- 400 3:45 pm**  
"If You Are a Dreamer...": White Space as an Invitation in Shel Silverstein's Work  
**Anni Perheentupa Mackey, English (M)**
- 401 4:00 pm**  
The Eighth Year at Hogwarts: Putting Rainbow Rowell's Carry On In Conversation With The Harry Potter Series and Its Fanfiction  
**Sequoia Stone, English (M)**
- 402 4:15 pm**  
The Gender Pronoun Debate: Appealing to Offensophobia for an Answer  
**Thomas Gustafson, Philosophy (M)**

## Session D-3

Oral Interdisciplinary 11

**Friday, March 2, 2018, 3:00 pm**

Location: Tehuanco

- 403 3:00 pm**  
Picture-Word Interference in Bimodal Bilinguals  
**Megan Mott, Psychology (M)**
- 404 3:15 pm**  
Cultural Match, Language Match, and Parent-Child Functional Impairment Evaluations  
**Raymond La, Psychology (M)**

- 405 3:30 pm**  
Characteristics of English- and Spanish-Speaking Mother-Child Engagement During Free Play  
**Allyson Masters, Psychology (M)**
- 406 3:45 pm**  
Alcohol Use Disparities among Lesbian, Bisexual and Heterosexual Women Ages 14-64 in the Nurses' Health Study II  
**Megan Webb-Morgan, Public Health Epidemiology (M)**
- 407 4:00 pm**  
An exploratory study of mental health and substance abuse among at-risk indigenous youth in Yucatán, México  
**Kayla Mulholland, Social Work (M)**
- 408 4:15 pm**  
Health Characteristics of Competitive Collegiate Dancers  
**Cheyenne Smith, Physical Therapy (D)**

## Session D-4

Oral Engineering and Computer Science 9

**Friday, March 2, 2018, 3:00 pm**

Location: Aztlan

- 409 3:00 pm**  
Microstructural Characterization of Ultraviolet Exposed Polyurea  
**Mohammed Atif Shaik, Mechanical Engineering (M)**
- 410 3:15 pm**  
Leveraging Resonance for Amplitude Amplification in Polyurea-based Polymer-Polymer Composites  
**Brian Wang, Mechanical Engineering (M)**
- 411 3:30 pm**  
Synthesis and Characterization of Polyurea Microspheres  
**Sophia Do, Bioengineering - Biomaterials (M)**
- 412 3:45 pm**  
A 3D Printed Microstrip Patch Phased Array Antenna with Beamforming Network  
**Azzam Tabbal, Electrical Engineering (M)**
- 413 4:00 pm**  
Comparative Design of 60GHz Antenna structure in HTCC and LTCC  
**Tyler Reid, Electrical Engineering (M)**

Please silence your cell phones and other devices.

(U) = Undergraduate; (M) = Masters; (D) = Doctoral

- 414 4:15 pm**  
Wide scan circular polarized multi-beam antenna for 5G communication  
**Ila Agnihotri, Engineering Sciences (D)**

## Session D-5

Oral Physical and Mathematical Sciences 11

**Friday, March 2, 2018, 3:00 pm**

Location: Metztli

- 415 3:00 pm**  
Detection of Double Strand Breaks in Linear Bacterial Artificial Chromosome DNA Due to Ionizing Radiation Dose  
**Ashley Matsushita, Medical Physics (M)**
- 416 3:15 pm**  
Substituent Effects Maximize the Brightness of New Fluorescent Cytidine Analogues  
**Katrina Ngo, Chemistry (U)**
- 417 3:30 pm**  
A DFT Investigation of Ruthenium Catalyzed Conversion of 1-pentene to (E)/(Z)-2-pentene  
**Jacob Hirschi, Chemistry (U)**
- 418 3:45 pm**  
Work Towards the Total Synthesis of Angiogenesis Inhibitor Azaspiroene  
**Paul Smith, Chemistry (M)**
- 419 4:00 pm**  
Atroposelective Synthesis of Diaryl Ether Naphthoquinones  
**Ryan Noorbehesht, Chemistry (M)**
- 420 4:15 pm**  
Electron Poor Bifunctional Ligands and their Metal Complexes  
**Daniel Sattler, Chemistry (D)**

## Session D-6

Oral Behavior and Social Sciences 13

**Friday, March 2, 2018, 3:00 pm**

Location: Templo Mayor

- 421 3:00 pm**  
Living out of the box; an autoethnographic tale of imposterism  
**Chasejamison Manar-Spears, Sociology (U)**

- 422 3:15 pm**  
The Importance of Social Capital in Microfinance, A Case Study from Rural Uganda  
**Katherine Nager, Political Science (M)**

- 423 3:30 pm**  
The Process of Reclaiming Straub: An Autoethnographic Exploration of Father and Daughter Relationship in the Ku Klux Klan  
**Kendra Straub, Communication (M)**

- 424 3:45 pm**  
Assessing Neighborhood Conditions Using Google Earth Engine and Google Street View  
**Chi-Feng Yen, GIScience (M)**

- 425 4:00 pm**  
Gentrification and Social Media: A new approach to integrate culture and economy in gentrification  
**Chanwoo Jin, Geography (D)**

- 601 4:15 pm**  
An Examination of the Relationship Between Childhood Trauma Exposure, Juvenile Delinquency, and Attention-Deficit Hyperactive Disorder  
**Tara Montgomery, Psychology (U)**

## Session D-7

Oral Biological and Agricultural 7

**Friday, March 2, 2018, 3:00 pm**

Location: Visionary Suite

- 426 3:00 pm**  
Anthropogenic debris consumption by wetland fishes  
**Ricardo DeSantiago, Environmental Sciences (U)**
- 427 3:15 pm**  
Plant Community Composition Determines Sediment Biogeochemistry in a Southern California Salt Marsh  
**Wendi White, Biology - Ecology (U)**
- 428 3:30 pm**  
Biochemical Warfare: coevolution of venom and venom resistance among rattlesnakes and mammal prey  
**Kelly Robinson, Ecology (M)**
- 429 3:45 pm**  
Do predators regulate urchin populations on southern California rocky reefs?  
**Robert Dunn, Ecology (D)**

- 430 4:00 pm**  
Impacts of phytoplankton phosphorous content on the magnitude of predator-induced morphological defenses in two *Daphnia* species  
**Shelby Rinehart, Ecology (D)**

- 431 4:15 pm**  
The coral microbiome and thermal resilience of *Pseudodiploria strigosa* across Bermuda's reef zones  
**Lais Farias Oliveira Lima, Ecology (D)**

## Session D-8

Oral Behavior and Social Sciences 13  
**Friday, March 2, 2018, 3:00 pm**  
Location: Legacy Suites

- 432 3:00 pm**  
Case of Mistaken Identities in the Stock Market  
**Jonathan Morris, Finance (U)**
- 433 3:15 pm**  
Best Sustainable Practice  
**Shannon Lee, Marketing (U)**
- 434 3:30 pm**  
Investigating Cross-Cultural Predictors of Job Insecurity  
**Giovanni Ferrante, Psychology - Emphasis I/O Psychology (U)**
- 435 3:45 pm**  
Gender, Ethnicity, and Scores on the Helping Attitude Scale Influence Helping Behavior  
**Adam Charvez Jr., Psychology (U)**
- 436 4:00 pm**  
A Multinational Approach at Determining Moderators of the Relationship Between Job Insecurity and Job Satisfaction  
**Julie Ton-Vuong, Psychology - Industrial/Organizational Psychology (U)**
- 437 4:15 pm**  
Motives for Helping Behavior and Stress  
**Saige Riley, Applied Psychology (M)**

## Saturday, March 3, 2018

### Session H: Oral Presentations

#### Session H-1

Oral Biological and Agricultural 12  
**Saturday, March 3, 2018, 9:00 am**  
Location: Pride Suite

- 554 9:00 am**  
Cis-regulatory Analysis of the Ciona Robust Pou4 Gene  
**Tiffany Hoang, Biology, Cellular -Molecular Biology (U)**
- 555 9:15 am**  
MARCH-mediated Post-Translational Regulation of the Hepatocyte Growth Factor Receptor  
**Jesus Ortiz, Biology (U)**
- 556 9:30 am**  
Modeling pharmacodynamics on HIV latent infection in the face of antiretroviral resistance  
**Maya Weissman, Cellular - Molecular Biology (U)**
- 557 9:45 am**  
Elucidation of UNC-45 function using FRET  
**Abdallah Ashour, Biology (U)**
- 558 10:15 am**  
The first demonstration of EMAST, a biomarker for aggressive human colorectal cancer, in a mouse model of disease  
**Jennifer Luu, Biochemistry (U)**
- 559 10:30 am**  
Pan-genome Analysis of Mycobacterium Tuberculosis Clinical Strains  
**Norman Kuo, Bioinformatics (M)**

#### Session H-2

Oral Behavior and Social Sciences 20  
**Saturday, March 3, 2018, 9:00 am**  
Location: Park Boulevard

- 560 9:00 am**  
Atypical sensory processing in toddlers with autism spectrum disorders  
**Ellyn Pueschel, Psychology (U)**

**Please silence your cell phones and other devices.**

(U) = Undergraduate; (M) = Masters; (D) = Doctoral

- 561 9:15 am**  
Functional overconnectivity between sensory processing networks in children with autism spectrum disorders  
**Ellyn Pueschel, Psychology (U)**
- 562 9:30 am**  
EEG Resting State Analysis of Fibromyalgia Patients  
**David White, Psychology (U)**
- 563 9:45 am**  
Spanish/English Bilingual Processing of Cognates, False Cognates, and Noncognates: An EEG Study  
**Jamie Renna, Psychology (M)**
- 564 10:00 am**  
Aberrant Reward Processing in Adolescent Irritability  
**Maria Kryza-Lacombe, Clinical Psychology (D)**
- 565 10:15 am**  
Local Gyrfication Abnormalities in Middle-Aged Adults with Autism Spectrum Disorders  
**Jiwandeep Kohli, Clinical Psychology (D)**

## Session H-3

Oral Humanities 6

**Saturday, March 3, 2018, 9:00 am**

Location: Tehuanco

- 566 9:00 am**  
Feminism from Within: Ancient Chinese Wisdom Traditions as the Foundation for Contemporary Chinese Women to Embrace Modern Femininity and Gender Equality  
**Hannah Morrison, International Business - Chinese & Asian Studies (U)**
- 567 9:15 am**  
The Gulf War Did Not Take Place (In Hollywood)  
**Andrea Alvarado, History and English (U)**
- 568 9:30 am**  
“And Then You Destroy Yourself” Richard Nixon, Othering, Race, and Gender  
**Derek Bell, History (M)**
- 569 9:45 am**  
The Cold War Congo  
**Aliyah Beiruti, History (M)**

- 570 10:00 am**  
Rhetorical Insights into Islamic Feminism  
**Marwa Abdalla, Communication (M)**

- 571 10:15 am**  
Distorting Mirrors: A Creative Exploration of the Value of Queer Dystopias  
**C. Brooke Petersen, Creative Writing - Poetry (M)**

## Session H-4

Oral Engineering and Computer Science 11

**Saturday, March 3, 2018, 9:00 am**

Location: Aztlan

- 572 9:00 am**  
Effect of Biofilm Formation on Biodegradable Organic Matter During Ultrafiltration  
**Anita Sanchez, Environmental Engineering (U)**
- 573 9:15 am**  
Resource Recovery from Wastewater – the Use of Secondary Effluent for Algal Biomass Cultivation  
**Daniel Delgado, Environmental Engineering (U)**
- 574 9:30 am**  
Process Development for Microfabrication of Scaled-up Glassy Carbon Electrodes and their In-Vitro Characterization  
**Surabhi Nimbalkar, Bioengineering (M)**
- 575 9:45 am**  
Novel MEMS Pattern Transfer Technology for Origami-Styled 3D Integrated Intracortical/ Epicortical Neural Probes  
**Claudia Cea, Bioengineering (M)**
- 576 10:00 am**  
Surface Structure Modifications of Glassy Carbon Microelectrodes for Improved Electrochemical Detection of Serotonin  
**Christopher Deutschman, Mechanical Engineering (U)**
- 577 10:15 am**  
Fabrication & in-vitro characterization of flexible microelectrode array for spinal cord stimulation  
**Brinda Kodira Cariappa, Bioengineering (M)**



## Session H-5

Oral Humanities 7

**Saturday, March 3, 2018, 9:00 am**

Location: Metztli

**578 9:00 am**  
Untangling Arguments about Ergotism and the Salem Witch Trials - Network Analysis and Historiography  
**Annie Farrington, History (U)**

**579 9:15 am**  
The Ghost Dance Movement of 1890: Past and Present Perspectives  
**Morgan Webber, History (U)**

**580 9:30 am**  
History, Identification, and Significance of Buttons at the Nate Harrison Site  
**Shannon Farnsworth, Anthropology -History (U)**

**581 9:45 am**  
Transitioning Subsistence Patterns, Meat Preservation and the Nate Harrison Site  
**Leah Hails, Anthropology (U)**

**582 10:00 am**  
Whose Jerusalem: The evolution of a religious city into a political hot topic.  
**S. L. Kay, History (M)**

**583 10:15 am**  
Stereotypes on the Margins of the California Gold Rush  
**Eric Johnson, History (M)**

## Session H-6

Oral Behavior and Social Sciences 21

**Saturday, March 3, 2018, 9:00 am**

Location: Templo Mayor

**584 9:00 am**  
Border corruption along the United States Border  
**Moises Cardenas, Public Administration (U)**

**585 9:15 am**  
Resident Perceptions of Neighborhood Safety within the San Diego Promise Zone  
**Sabrina Hua, Criminal Justice (U)**

**586 9:30 am**  
Health Consequences of Sentencing Disparities in the U.S. Criminal Justice System: State of the Science  
**Alejandro Contreras, Criminal Justice (U)**

**587 9:45 am**  
Bus Passes, Bullets, Handcuffs & Hugs: Voices of Parole Agents in a Time of Correctional Realignment  
**Laura Murray, Criminal Justice/Sociology (U)**

**588 10:00 am**  
Police Officers' Narrative of the Meaning of Race and Place  
**R. Christine Montgomery, Criminal Justice - Criminology (M)**

**589 10:15 am**  
Who deserves to stay? A study of immigrants and their opinions on deportation  
**Doria Hernandez, Criminal Justice - Criminology (M)**

## Saturday, March 3, 2018 Session I: Oral Presentations

### Session I-1

Oral Engineering and Computer Science 12

**Saturday, March 3, 2018, 11:00 am**

Location: Pride Suite

**590 11:00 am**  
Real-time IP-Based Monitoring of Effects of Extreme Environment on Performance of Organic Solar Cells (OSC) - Case Study  
**Mihir Patki, Mechanical Engineering (M)**

**591 11:15 am**  
Quasi-Static and Dynamic Performance of Polymeric Foam  
**Nathan Reed, Mechanical Engineering (M)**

**592 11:30 am**  
Measurement of high temperatures in premixed flames using two-color soot pyrometry with a consumer DSLR camera  
**Shruthi Dasappa, Mechanical Engineering (D)**

**593 11:45 am**

A Raman spectroscopy study of flame temperature effect on the graphitization of nascent carbon nanoparticles formed in premixed flames  
**Yuniba Yagues, Chemistry (U)**

**594 12:00 pm**

Measurement of Size Distributions approaching 1 nm for Carbon Nanoparticles formed in Flames exceeding 2000K  
**Aleksandr Aleshin, Mechanical Engineering (U)**

**Session I-2**

Oral Humanities 8

**Saturday, March 3, 2018, 11:00 am**

Location: Park Boulevard

**595 11:00 am**

We Shall Overcome: The Fight for African-American Equality in 1960's San Diego  
**Nicholas Parker, History (U)**

**596 11:15 am**

Robert F. Williams: Armed Self Defense and the Black Freedom Struggle  
**Cassandra Tanks, History (U)**

**597 11:30 am**

La Chinesca: Mexicali's Chinatown and Chinese Community  
**Neida Venegas, History/Spanish (U)**

**598 11:45 am**

Prominent Hydraulic Projects Propelled by an Engineering Debacle in the Imperial Valley  
**Melissa Fierro Nunez, History (U)**

**599 12:00 pm**

Lining the All-American Canal: The Transnational Consequences of American Conservation  
**Maral Sapari, History (U)**

**600 12:15 pm**

The Colorado River Land Company and its impact on Mexicali Baja California's development  
**Lourdes Guzman-Amparo, History (U)**

**Session I-3**

Oral Behavior and Social Sciences 22

**Saturday, March 3, 2018, 11:00 am**

Location: Tehuanco

**602 11:15 am**

Externalities of Video Games Consumption  
**Robert Simpson, Economics - Quantitate Analysis (U)**

**603 11:30 am**

An exploratory study of sexual violence correlates using Campus Climate Survey of Sexual Violence data  
**Luis Darwin Avalos, Psychology (U)**

**604 11:45 am**

Analysis of the Saudi Arabian Domestic Abuse Regulation of 2013  
**Evgeny Kukharev, ISCOR (U)**

**605 12:00 pm**

I was just joking: An inquiry of the use of humor during disclosure of self-directed violence  
**Nathaniel Rogers, Health Communication (U)**

**606 12:15 pm**

Public Voice in Social Media: A Twitter Case Study of Charlottesville Attack  
**Jaehhe Park, Geography (D)**

**Session I-4**

Oral Biological and Agricultural 13

**Saturday, March 3, 2018, 11:00 am**

Location: Aztlan

**607 11:00 am**

Anti-predator behaviors of the banded gecko (*Coleonyx variegatus*)  
**Jennifer Hammond, Biology (U)**

**608 11:15 am**

How rostrum temperature can affect the molecular pathway of infrared detection in *C. oreganus*  
**Donna Tiu, Biology - Zoology (U)**

**609 11:30 am**

*Crotalus oreganus helleri* are able to detect thermal contrasts  
**Robert Cattell, Biology - Zoology (U)**



- 610 11:45 am**  
The Effects of Acetylcholine Modulation During Influenza Infection in the Murine Lung  
**Alex Horkowitz, Cell - Molecular Biology (M)**

- 611 12:00 pm**  
Total evidence parsimony analysis of the extinct river dolphin genus *Parapontoporia*  
**Bridget Borce, Evolutionary Biology (M)**

- 612 12:15 pm**  
An Injected bacterial effector protein directly induces larval to juvenile development in marine invertebrate  
**Kyle Malter, Cell - Molecular Biology (D)**

## Session I-5

Oral Behavior and Social Sciences 23

**Saturday, March 3, 2018, 11:00 am**

Location: Metztli

- 613 11:00 am**  
Structural Determinism Hinders Renal Transplantation Equity Among African Americans  
**Zakkiyya West, Political Science and Africana Studies (U)**

- 614 11:15 am**  
Cancer Knowledge and Cancer Fatalism in the Deaf Community  
**Marcelo Nieto, Public Health (M)**

- 615 11:30 am**  
Factors Associated with Adaptive and Maladaptive Coping in Female Adolescent and Young Adult Cancer Survivors  
**Yessenia Zepeda, Social Work and Public Health Health Management and Policy (M)**

- 616 11:45 am**  
“I was either excluded and prevented from doing what I was good at”: An Investigation into the Alienated LGBT Negotiating Marginalization in the Workplace  
**Dacheng Zhang, Communication (M)**

- 617 12:00 pm**  
LGBT+ Young Adults: Stigma and Coping Methods  
**Chhandara Put, Social Work (M)**

- 618 12:15 pm**  
Socioeconomic adversity, social resources, and allostatic load: Results from the Study of Latino Youth (SOL Youth)  
**Kimberly Savin, Clinical Psychology (D)**

## Session I-6

Oral Interdisciplinary 15

**Saturday, March 3, 2018, 11:00 am**

Location: Templo Mayor

- 619 11:00 am**  
Projected Hartree-Fock with an External Field  
**Joseph Millar, Physics (U)**

- 620 11:15 am**  
GEANT4 Based Monte Carlo Characterization of 3-D Lyso Scintillation Crystal Array for Future use in Emission Tomography  
**Robert Wilson, Medical Physics (M)**

- 621 11:30 am**  
“Meta-Sweeper: A Machine Learning Based Approach For Metagenomes to Reveal the Hidden Value in Human ‘Junk’ DNA”  
**Kellie Kim, Bioinformatics - Medical Informatics (M)**

- 622 11:45 am**  
Development and validity of an algorithm to classify mammogram results using cancer registry-linked transactional electronic health record data  
**Purva Jain, Epidemiology (D)**

- 564 11:30 am**  
Let’s talk about secs: Gender differences in distracted driving  
**Hedaya Rizeq, Kinesiology - Movement Sciences (M)**

- 565 11:45 am**  
Communicating Pain: How Gender Identity Influences Self-Disclosure and Pain Tolerance during the Cold Pressor Task  
**Chelsea Chapman, Communication (M)**

- 566 12:00 pm**  
Latina Mothers Speak: A Comparative Analysis of Motherhood Experiences in the Tijuana/ San Diego Border/lands  
**Sarai Godoy, Chicana and Chicano Studies (M)**





## **Poster Presentations**

**Friday, March 2, 2018**

---

**Sessions A, B, C, D and E**

Poster presenters are required to stand by their poster during the entire 1-hour and 30 minute discussion period. Each oral presentation is allotted 10 minutes followed by a 5-minute question and answer period. Participants and guests are asked to enter or leave the rooms only between presentations.



**SAN DIEGO STATE  
UNIVERSITY**

## Friday, March 2, 2018

### Session A: Poster Presentations

#### Session A-9

Poster Physical and Mathematical Sciences 2

Friday, March 2, 2018, 9:00 am

Location: Montezuma Hall

- 146 9:00 am A**  
Design of Stapled Peptides targeting  
CHP-NHE-1 Protein-Protein Interaction  
**Faith Aynekulu, Chemistry (U)**
- 147 9:00 am B**  
Structural Optimization of RET Kinase Inhibitors  
**Valeria Garcia, Biochemistry (U)**
- 148 9:00 am C**  
tCc- A New Family of Fluorescent Nucleosides  
**Susan Andersen, Chemistry (U)**
- 149 9:00 am D**  
Our Adventurous Syntheses of Azaspirene, a  
Powerful Angiogenesis Agent against Cancer  
**Stephanie Cox, Chemistry - Biochemistry (U)**
- 150 9:00 am E**  
Total Synthesis of Lagunamide A: A Highly  
Stereoselective Approach for a Powerful  
Anti-Malarial and Anti-Cancer Agent  
**Mark Mahoney, Biochemistry (U)**

#### Session A-10

Poster Health and Nutrition and Clinical Sciences 1

Friday, March 2, 2018, 9:00 am

Location: Montezuma Hall

- 151 9:00 am F**  
Functional Properties of Mealworm Proteins  
**Sarah Kim, Food and Nutrition (U)**
- 152 9:00 am G**  
Avocado Consumption, Metabolic Syndrome, and  
Cancer Risk: Implications for Cancer Disparities  
**Marisela Arechiga-Romero, Psychology (U)**

- 153 9:00 am H**  
Effects of watermelon consumption on satiety  
and anthropometric indices in overweight and  
obese adults  
**Tiffany Lum, Nutritional Science (M)**

- 154 9:00 am I**  
Effect of Pistachios and Mixed Nuts on Bone  
Density and Osteogenic Gene Expression in  
Young Male Rats  
**Brooke Wickman, Nutritional Sciences &  
Exercise Physiology (M)**

#### Session A-11

Poster Engineering and Computer Science 1

Friday, March 2, 2018, 9:00 am

Location: Montezuma Hall

- 155 9:00 am J**  
Flow & RVAD Placement within the RV  
**Sherwin Navindaran, Bioengineering (M)**
- 156 9:00 am K**  
The Effect of Inflow Cannula Angle on the  
Intraventricular Flow Field of the LVAD-  
Assisted Heart  
**Nikolas Marquez-Maya, Mechanical Engineering  
- Bioengineering (U)**
- 157 9:00 am L**  
The effect of mitral valve prosthesis design and  
orientation on intraventricular flow transport  
studied in a mock circulatory loop  
**Vi Vu, Mechanical - Aerospace (D)**
- 158 9:00 am M**  
Development of a Training Apparatus in  
Lower-Limb Muscular Strength and Power  
for Older Adults  
**Edgar Ramirez, Biology-Bioengineering (U)**
- 159 9:00 am N**  
A Functional Map of Oncogenic States  
for Breast Cancer  
**Nina Ly, Biochemistry (U)**

## Session A-12

Poster Biological and Agricultural 1

**Friday, March 2, 2018, 9:00 am**

Location: Montezuma Hall

- 160 9:00 am O**  
Antibiotic resistant gene variation in metagenomes collected across a diverse array of ecosystems  
**Rhaya Alkafaji, Biology (U)**
- 161 9:00 am P**  
Quorum Sensing in the Hydrocarbon Degrading genus *Marinobacter*  
**Jenna Powell, Biochemistry (U)**
- 162 9:00 am Q**  
Using a novel CRISPR/Cas9 screening platform to elucidate the role of APOE risk alleles in Alzheimer's Disease.  
**Nicholas Hernandez, Biology (U)**
- 163 9:00 am R**  
Seagrass edge effects: the influence of patch edge type on epifaunal communities in restored eelgrass habitat  
**Kaylee Griffith, Biology, Ecology Program (M)**
- 164 9:00 am S**  
Sensitive Analysis of Multiple Sclerosis Biomarker Using Nonlinear Multi-Photon Laser Wave-Mixing Spectroscopy  
**Willi Cheung, Biochemistry (M)**
- 165 9:00 am T**  
A Gap in Reliable Medical Access: How the Absence of Language Services Burdens Non-English Speaking Hospital Patients  
**Melissa Ruiz, Public Health (U)**

## Session A-13

Poster Behavior and Social Sciences 3

**Friday, March 2, 2018, 9:00 am**

Location: Montezuma Hall

- 166 9:00 am U**  
Los Desechables (The Disposable Ones): Redefining Migrant Identity along the Northern Mexican Border  
**Derick Abrigu, Latin American Studies and Public Administration (M)**

- 167 9:00 am V**  
Rural and Urban Variation in Opioid Related Sentencing Disparities in the U.S. Justice System  
**Keely Tedone, Sociology (U)**

- 168 9:00 am W**  
Nurse Work Stress Predictors Analysis: A Relative Weight Approach  
**Christian Ampo, Psychology (U)**

- 169 9:00 am X**  
The Effects of Prenatal Alcohol Exposure and Dietary Choline Levels on Social Development  
**Grecia Nolasco, Psychology (U)**

- 170 9:00 am Y**  
Undergraduate Nurse Attitudes  
**Amanda Monteverde, Nurse Practitioner/Clinical Nurse Specialist (M)**

## Session A-14

Poster Behavior and Social Sciences 4

**Friday, March 2, 2018, 9:00 am**

Location: Montezuma Hall

- 171 9:00 am Z**  
Urban-Rural Distinctions in Hospital Discharge Rates and the Relation to Health IT Availability  
**Melissa Yakuta, Business Administration Management Information Systems (U)**
- 172 9:00 am AA**  
The Effect of Caffeine Intake & Sleep Deprivation on Academic Performance in College Students  
**Margot Salgado, Psychology (U)**
- 173 9:00 am BB**  
The Relation between Verbal Fluency and Inhibitory Control in Bilingual Adults  
**Kayla Glaser, Speech-Language Pathology (M)**
- 174 9:00 am CC**  
Relationships between Vocabulary and Nonword Repetition in Vietnamese-English Bilingual Children  
**Quynh Dam, Language and Communicative Disorders (D)**
- 175 9:00 am DD**  
Effectiveness of home delivered computerized treatments in reducing symptoms of worry  
**Gabrielle Verdura, Psychology (U)**

Please silence your cell phones and other devices.

(U) = Undergraduate; (M) = Masters; (D) = Doctoral

- 176 9:00 am EE**  
Does Race Moderate the Association between Substance Use Stigma and Methadone Treatment Success in the U.S.?  
**Brittany D'Ambrosio, Interdisciplinary Research on Substance Use (D)**

## Session A-15

Poster Behavior and Social Sciences 5

**Friday, March 2, 2018, 9:00 am**

Location: Montezuma Hall

- 177 9:00 am FF**  
The Role of Emotion Processing and Interpersonal Beliefs in Suicidality in Psychotic Disorders Across the Lifespan  
**Jennifer Villa, Psychology (U)**
- 178 9:00 am GG**  
Influences of Maternal Ethnic Identity on Depression, Anxiety, and Irritability in Offspring  
**Geneva Toledo, Psychology (U)**
- 179 9:00 am HH**  
Relation Between Threat Bias, Irritability, and Anxiety in a Community Sample of Adolescents  
**Yonca Cam, Psychology (U)**
- 180 9:00 am II**  
Piloting Girls Invest, an innovative savings account focused on investment in the future to address social and economic factors underlying disproportionately high rates of adolescent pregnancy among Latina youth  
**Jasmin Garcia, Biology (U)**
- 181 9:00 am JJ**  
California Verbal Learning Test II (CVLT-II) Performance in Prodromal Disease  
**Meghan Ursa, Psychology (U)**
- 182 9:00 am KK**  
Parent Motivation in Child Mental Health Treatment: Associations with Parent Engagement  
**Gina May, Psychology (U)**

## Session A-16

Poster Physical and Mathematical Sciences 3

**Friday, March 2, 2018, 9:00 am**

Location: Montezuma Hall

- 183 9:00 am LL**  
Dynamics of Phage Survival in Limited Bacterial Growth Conditions  
**James Hellfeier, Physics (U)**
- 184 9:00 am MM**  
Modeling Speciation through Lysogeny Reproduces Phage-Bacteria Abundance Data Across Ecosystems  
**Maxwell Anthenelli, Physics (U)**
- 185 9:00 am NN**  
Modeling Phage Survival in Limited Bacterial Growth Conditions  
**Nicole Tomassi, Applied Mathematics Emphasis in Statistics (U)**
- 186 9:00 am OO**  
Subdiffusive motion of phages through mucus  
**Elena Arroyo, Physics (U)**
- 187 9:00 am PP**  
Modeling HIV Latent Infection Under Drugs of Abuse  
**Timmy Liang, Applied Mathematics - Computational Science (U)**
- 188 9:00 am QQ**  
Mathematical models to predict the risk of HIV infection under drugs of abuse  
**Angelica Bloomquist, Applied Mathematics (U)**
- 189 9:00 am RR**  
Impact of Environmental temperature variations on the dynamics of dengue epidemics  
**Pavan Kumar Chalumuri, Computer Science (M)**

## Session A-17

Poster Interdisciplinary 3

**Friday, March 2, 2018, 9:00 am**

Location: Montezuma Hall

- 190 9:00 am SS**  
Modification of Tailocins to Generate Cystic Fibrosis-Relevant Antimicrobials  
**Jacob Vander Griend, Microbiology (U)**

- 191 9:00 am TT**  
Investigating the Bacterial Host of crAssphage;  
A Highly Abundant Bacteriophage Found  
Around the Globe  
**Ashelyn Lutrick, MicroBiology (U)**
- 192 9:00 am UU**  
Characterization of a Novel Bacterial Effector  
Necessary to Induce Eukaryotic Cell Death  
**Iara Rocchi, Microbiology (M)**
- 193 9:00 am VV**  
Characterization of red snow viral communities  
in the Canadian Pacific Northwest  
**Adam Barno, Cellular - Molecular Biology (M)**
- 194 9:00 am WW**  
A Bacterial Effector Necessary for Marine  
Tubeworm Metamorphosis  
**Charles Ericson, Microbiology (M)**

## Friday, March 2, 2018

### Session B: Poster Presentations

#### Session B-9

Poster Interdisciplinary 6  
**Friday, March 2, 2018, 12:00 pm**  
Location: Montezuma Hall

- 241 10:45 am A**  
Group-level Linguistic Alignment in an Online  
Conversation  
**Hagyeong Shin, Linguistics (M)**
- 242 10:45 am B**  
Neural Correlates of Specific Language  
Impairment  
**Julia Newton, Speech and Language Hearing  
Sciences (U)**
- 243 10:45 am C**  
Women in Hypertext Literature  
**Jessica Ramsey, English/ Recreational  
Tourism Management (U)**

- 244 10:45 am D**  
Who Is Next?: A Rhetorical and Sentiment  
Analysis of The #MeToo Movement  
**Danger Riley, Graduate Program for Homeland  
Security (M)**
- 245 10:45 am E**  
The Effects of Media (Mis)Representation  
of the Mentally Ill from 1965-1975  
**Sheelah Santos, Comparative Literature and  
Television, Film, and New Media-Production (U)**
- 246 10:45 am F**  
Disabilities and Study Abroad  
**Eugene Norman, Psychology (U)**

#### Session B-10

Poster Physical and Mathematical Sciences 5  
**Friday, March 2, 2018, 12:00 pm**  
Location: Montezuma Hall

- 247 10:45 am G**  
A Mild Catalytic Method for Sulfonylation of Arenes  
**Erik Alvarez, Biochemistry (U)**
- 248 10:45 am H**  
The Cinchona-Alkaloid catalyzed nucleophilic  
dynamic kinetic resolution of aryl-naphthoquinones  
**Gregory Dawson, Chemistry - Biochemistry (U)**
- 249 10:45 am I**  
Design and Synthesis of Imidazole Substituted  
Phosphine Ligands  
**Hanne Henriksen, Chemistry (U)**
- 250 10:45 am J**  
Copper Promoted sp<sup>3</sup> Carbon-Nitrogen  
Cham-Lam Coupling  
**Brent Thomas, Chemistry (M)**
- 251 10:45 am K**  
A Molecular Tweezer: Synthesis of Ru(II) Complex  
Bearing Trans -Spanning Ligands with Olefin  
Bridge as a Water Oxidation Catalyst (WOC)  
**Sima Yazdani, Chemistry (D)**



Please silence your cell phones and other devices.

(U) = Undergraduate; (M) = Masters; (D) = Doctoral

## Session B-11

Poster Engineering and Computer Science 3

Friday, March 2, 2018, 12:00 pm

Location: Montezuma Hall

- 252 10:45 am L**  
Reuse of Wastewater Using Anaerobic Baffled Reactors (subject to title change)  
**Laura Panduro, Environmental Engineering (U)**
- 253 10:45 am M**  
The Effect of Riparian Restoration on the Mechanisms of Urban Channel Hydrogeomorphic Processes in the San Diego River Watershed  
**Lauren Mathews, Environmental Engineering (M)**
- 254 10:45 am N**  
Urban Hydrologic Processes after Vegetation Restoration in San Diego, California  
**Kyler Stevenson, Environmental Engineering (U)**
- 255 10:45 am O**  
Predicting evapotranspiration following wildfires using supervised machine learning  
**Patrick Poon, Civil Engineering, Water Resources (M)**
- 256 10:45 am P**  
Applying harmonic and stochastic methods to predict post-fire hydro-geomorphic risks  
**Jack Mikesell, Environmental Engineering (U)**
- 257 10:45 am Q**  
Investigating the Impacts of Scaling Hydrologic Models on Hydrologic Metrics Used to Quantify Habitat Disturbance  
**Kelly Flint, Civil Engineering, Water Resources Engineering (M)**

## Session B-12

Poster Biological and Agricultural 3

Friday, March 2, 2018, 12:00 pm

Location: Montezuma Hall

- 258 10:45 am R**  
Investigating human UNC45 paralogues using the Drosophila model system  
**Tobias Hernandez Quevedo, Cellular - Molecular Biology (U)**

- 259 10:45 am S**  
The role of YAP and MRTFA in GBM Proliferation and Migration  
**Daniel Ryback, Cellular - Molecular Biology (M)**
- 260 10:45 am T**  
Bacterial Substrate Utilization Patterns  
**Dominic Cavalli, Cellular - Molecular Biology (U)**
- 261 10:45 am U**  
Intersection of Genotype and Phenotype: Informing Predictive Models  
**Rebecca de Wardt, Cellular - Molecular Biology (M)**
- 262 10:45 am V**  
The bHLH protein E47 regulates cancer stem cell markers in Pancreatic Cancer  
**Alejandra Contreras, Cellular - Molecular Biology (U)**
- 263 10:45 am W**  
Coral Stem Cells: Measuring epigenetic signatures in diverse cell populations to identify possible stem cells in Scleractinian coral  
**Kevin Green, Cellular - Molecular Biology (M)**

## Session B-13

Poster Interdisciplinary 7

Friday, March 2, 2018, 12:00 pm

Location: Montezuma Hall

- 264 10:45 am X**  
Evaluating Oral Health and Nutrition in Second Grade Classrooms  
**Cassidy Lutz, Nursing (U)**
- 265 10:45 am Y**  
Effect of Physical Exercise on Academic Engagement and Executive Functioning in Students with Autism Spectrum Disorder  
**Sarah Nakutin, School Psychology (M)**
- 266 10:45 am Z**  
Frequency, orthographic neighborhood and concreteness effects in deaf readers of English: an ERP study  
**Stephanie Osmond, Psychology (U)**
- 267 10:45 am AA**  
Short Form of the California Odor Learning Test  
**Conner Frank, Psychology (U)**



- 268 10:45 am BB**  
School Leadership for Social Justice: Exploring the Relationship Between the Beliefs and Practices of School Leaders in Title I Schools and Student Achievement  
**Elizabeth S. Rozich, Education (D)**

- 269 10:45 am CC**  
Fostering STEM Identity in Students of Color  
**Michelle DeJohnette, Philosophy in Education (D)**

## Session B-14

Poster Behavior and Social Sciences 7  
**Friday, March 2, 2018, 12:00 pm**  
Location: Montezuma Hall

- 270 10:45 am DD**  
Barriers and Facilitators for Community Mobilization Among Female Sex Trade in Tijuana, Mexico  
**Claudia Gonzalez, Social Work (M)**
- 271 10:45 am EE**  
The power of the earth: Iron Age Burial Mounds and Territoriality in Southeastern Kazakhstan  
**Salvador Navarro, Anthropology (U)**
- 272 10:45 am FF**  
Hospital Ownership and Patient Discharge Rates in California  
**Alanah Kayla Castillo, Public Health (U)**
- 273 10:45 am GG**  
How Does Treatment on Word-initial Clusters Affect Word-final Clusters?  
**Alyssa Pitts, Speech, Language, and Hearing Sciences (U)**
- 274 10:45 am HH**  
Quantifying A Hundred Years of Landscape Change in the San Pasquale Valley, Calabria, Italy  
**Yesenia Garcia, Anthropology (M)**
- 275 10:45 am II**  
A Geo-Spatial Analysis of the Association Between Craft Breweries and Crime  
**Emily August, Criminology - Criminal Justice (M)**

## Session B-15

Poster Behavior and Social Sciences 8  
**Friday, March 2, 2018, 12:00 pm**  
Location: Montezuma Hall

- 276 10:45 am JJ**  
Preliminary Model of Intelligibility in Children with Cerebral Palsy Using Kinematic and Acoustic Measures  
**Caitlin Williams, Speech Language and Hearing Sciences (U)**
- 277 10:45 am KK**  
Quantifying a descriptive assessment of speech sound disorders: Percent accuracy as a predictor of phonemic inventory inclusion  
**Emilie Sanchez, Speech-Language Pathology (M)**
- 278 10:45 am LL**  
Does Order Matter? Grammatical Development in Bilingual Preschoolers  
**Kira Powell, Speech, Language and Hearing Sciences (U)**
- 279 10:45 am MM**  
Assessing Fasting Plasma Glucose Change in Breast Cancer Survivors Participating in a Randomized Control Trial of Physical Activity  
**Max Fang, Public Health (U)**
- 280 10:45 am NN**  
Factors That Affect Willingness to Consume Insect-Based Foods in the United States  
**Emily Woolf, Exercise Physiology and Nutrition (M)**
- 281 10:45 am OO**  
Ubuntu Community Counseling Anti-Recidivism Project: A Trauma-Informed Educational Pipeline to the Counseling Professions  
**Ahlyiah Chambers, Psychology (U)**

## Session B-16

Poster Behavior and Social Sciences 9  
**Friday, March 2, 2018, 12:00 pm**  
Location: Montezuma Hall

- 282 10:45 am PP**  
Evaluating Complex Trauma, PTSD, and Recidivism in Juvenile Delinquents  
**Kelsie Telson, Criminal Justice - Criminology (M)**

Please silence your cell phones and other devices.

(U) = Undergraduate; (M) = Masters; (D) = Doctoral

- 283 10:45 am QQ**  
The Relationship between Executive Functioning Task Performance and Parent Reported Anxiety in Children  
**Dijla Alsaigh, Psychology (U)**
- 284 10:45 am RR**  
Attention Control and Anxiety  
**Lucy Maloney, Psychology (U)**
- 285 10:45 am SS**  
The Effects of Prenatal Exposure to Alcohol and Dietary Choline Levels on Anxiety-Related Behaviors  
**Michaela Hoover, Psychology (U)**
- 286 10:45 am TT**  
Experiences of Labor Exploitation and Sexual Violence among migrant women in Latin America  
**Breeanna Messner, Biology (U)**
- 287 10:45 am UU**  
The Beauty Myth and Social Media  
**Haydee Zavala, Education (D)**

## Session B-17

Poster Physical and Mathematical Sciences 6

**Friday, March 2, 2018, 12:00 pm**

Location: Montezuma Hall

- 288 10:45 am VV**  
Metallicity Analysis for Single and Circumbinary Star Planets  
**Arturo Ortiz, Astronomy (U)**
- 289 10:45 am WW**  
Outflows in MgII Emission and Absorption for Spatially Resolved Galaxies at  $0.8 < z < 1.4$  from MUSE HDFS Observations  
**Michael Bareian, Astronomy (M)**
- 290 10:45 am XX**  
The Apsidal Motion Constants in the Triple Star System KOI-126  
**Mitchell Yenawine, Astronomy (M)**
- 291 10:45 am YY**  
Probing the Circumgalactic Medium at  $z \sim 2$  using Close Quasar Pairs  
**Stephanie Stawinski, Astronomy (M)**

## Friday, March 2, 2018 Session C: Poster Presentations

### Session C-9

Poster Engineering and Computer Science 5

**Friday, March 2, 2018, 12:30 pm**

Location: Montezuma Hall

- 337 12:30 pm A**  
Novel Technique of Microfabrication for Multilayer, Freestanding, C-MEMS Structures  
**Zachariah Walker, Mechanical Engineering (M)**
- 338 12:30 pm B**  
Conductivity Reconstructions Using the Extended Kalman Filter  
**Christina Valen, Computational Science (M)**
- 339 12:30 pm C**  
Ab initio calculations of Gamow-Teller transitions  
**Jordan Fox, Computational Science (D)**
- 340 12:30 pm D**  
Flames "on edge": what makes them dangerous  
**Luca Carmignani, Mechanical - Aerospace Engineering (D)**

### Session C-10

Poster Engineering and Computer Science 6

**Friday, March 2, 2018, 12:30 pm**

Location: Montezuma Hall

- 341 12:30 pm E**  
A New Butterfly Antenna Element for Circular Polarized Series Fed Designs with Wide Axial Ratio Beamwidth at W-Band  
**Ghanshyam Mishra, Computational Science (D)**
- 342 12:30 pm F**  
A Series Fed Planar Microstrip Patch Array Antenna with 1D Beam Steering for 5G Spectrum Massive MIMO Access point application.  
**Sandhya Krishna, Electrical - Computer Engineering (M)**
- 343 12:30 pm G**  
FPGA Implementation of a Reconfigurable Memory-Based Fast DCT Architecture  
**Jameson Thies, Computer Engineering (U)**

- 344 12:30 pm H**  
Dual Polarized Wideband Vivaldi Array Antenna Aperture for 5G Massive MIMO Panels  
**HaoLung Chu, Electrical and Computer Engineering (M)**
- 345 12:30 pm I**  
Relationship between low dissolved oxygen and organic matter in sediments and water of the San Diego River  
**Jordan Cain, Civil Engineering (U)**
- 346 12:30 pm J**  
Utilizing extrapolation methods to estimate average annual daily bicyclist and pedestrian volume from short-term count data in the City of San Diego  
**Mahdie Hasani, Civil Engineering -Transportation Engineering (M)**
- 347 12:30 pm K**  
Adopting cumulative learning to develop a real-time vision-based monitoring system for detecting and tracking vulnerable road users  
**Chenlei Zhang, Computer Science (M)**

## Session C-11

Poster Physical and Mathematical Sciences 7  
**Friday, March 2, 2018, 12:30 pm**  
Location: Montezuma Hall

- 348 12:30 pm L**  
Geophysical Mapping of San Diego Bay Paleo Channels  
**Xiomara Rosenblatt, Geology (U)**
- 349 12:30 pm M**  
Sources of Groundwater Recharge in the Mission Valley Aquifer  
**Sierra Wallace, Geography-Watershed Science (M)**
- 350 12:30 pm N**  
Pointy ice structure of a frozen water droplet  
**Ana Lomashvili, Electrical Engineering (U)**
- 351 12:30 pm O**  
Visual Delivery of Big Climate Data Using TV Signal Transmission Technology  
**Kerson Perez, Applied Mathematics (M)**

- 352 12:30 pm P**  
Latent Class Analysis and Random Forest Ensemble to Identify At-Risk Students in Higher Education  
**Kevin Pelaez, Statistics (M)**
- 353 12:30 pm Q**  
Preprocessing Epileptic EEG Data to Improve Machine Learning Classification  
**Misha Kutzman, Computational Science (D)**

## Session C-12

Poster Health and Nutrition and Clinical Sciences 2  
**Friday, March 2, 2018, 12:30 pm**  
Location: Montezuma Hall

- 354 12:30 pm R**  
Association of CETP Polymorphisms with Susceptibility for Risk of CKD  
**Sabrina Aden, Biology (U)**
- 355 12:30 pm S**  
An alternative to the Timed Up and Go for stratifying fall risk  
**Vineeta Parupudi, Kinesiology Pre PT (U)**
- 356 12:30 pm T**  
Electrophysiological correlates of error monitoring and awareness in stroke-induced aphasia  
**Alexa Cavalea, Speech Language and Hearing Sciences (U)**
- 357 12:30 pm U**  
Transition Metal Complexes: Toward Catalysis and Small Molecule Therapy  
**Esteban Delgado III, Chemistry (U)**
- 358 12:30 pm V**  
Is Diabetes a Risk Factor for Cancer in The Hispanic American Community?  
**Ernesto Gonzales, Psychology (U)**
- 359 12:30 pm W**  
Teen smoking among White and Latinos in San Diego and California  
**Michael Morrison, Public Health (U)**

Please silence your cell phones and other devices.

(U) = Undergraduate; (M) = Masters; (D) = Doctoral

## Session C-13

Poster Biological and Agricultural 5

Friday, March 2, 2018, 12:30 pm

Location: Montezuma Hall

- 360 12:30 pm X**  
Crystallization of the Universally Conserved tRNA Modification Enzyme tSAC  
**Jonathan Bush, Chemistry - Biochemistry (U)**
- 361 12:30 pm Y**  
Fluorination of Silica Surfaces in Capillary Electrophoresis  
**Sangho Yun, Chemistry (M)**
- 362 12:30 pm Z**  
Structural and Morphological Characterization of Egg Case Spider Silks  
**David Onofrei, Chemistry (D)**
- 363 12:30 pm AA**  
The Structure, Dynamics and Supramolecular Organization of Glandular Spider Silk Proteins  
**Dillan Stengel, Chemistry (D)**
- 364 12:30 pm BB**  
A mechanism for signal-dependent IKK $\beta$  activation driven by molecular interactions with poly-ubiquitin-bound NEMO  
**Samantha Cohen, Chemistry (D)**

## Session C-14

Poster Physical and Mathematical Sciences 8

Friday, March 2, 2018, 12:30 pm

Location: Montezuma Hall

- 365 12:30 pm CC**  
Characterization of PHMB as a coating for fused silica capillaries  
**Jessica Torres, Chemistry (M)**
- 366 12:30 pm DD**  
Impact of Environmental Factors on Neuromodulatory Metabolites Produced by *Lactobacillus rhamnosus* GG  
**Brijinder Soni, Chemistry (M)**

- 367 12:30 pm EE**  
The Role of Caffeine in the Gut Microbiome  
**Ellen Kuang, Chemistry (M)**

- 368 12:30 pm FF**  
Kinetic Characterization of Human Pol  $\epsilon$  and Tumorigenic Mutants  
**Lucas Luna, Chemistry (D)**

- 369 12:30 pm GG**  
DNA Polymerization Kinetics of Tricyclic Cytidine (tC) Triphosphates by Reverse Transcriptase from AMV and M-MuLV  
**Marc Turner, Chemistry & Biochemistry (D)**

## Session C-15

Poster Engineering and Computer Science 8

Friday, March 2, 2018, 12:30 pm

Location: Montezuma Hall

- 370 12:30 pm HH**  
Increasing the Lifetime of Piezoelectric Diaphragms within Synthetic Jet Actuators  
**Jennifer Martin-Velazquez, Aerospace Engineering (U)**
- 371 12:30 pm II**  
Shakedown Test Results of the SDSU Water Tunnel  
**Jaime Dorado, Aerospace Engineering (U)**
- 372 12:30 pm JJ**  
Water Table Experiment  
**Isaac Gonzalez, Aerospace Engineering (U)**
- 373 12:30 pm KK**  
Evaluation of the accuracy of the Rotating Parallel Ray Omnidirectional Integration for instantaneous pressure reconstruction from the measured pressure gradient  
**Jose Moreto, Engineering Science (D)**
- 374 12:30 pm LL**  
Supercritical Regeneratively Cooled Methane-Oxygen Rocket Engine  
**Jaymee Panian, Aerospace Engineering (U)**
- 375 12:30 pm MM**  
Unmanned Aerial Systems Nonlinear High-Fidelity Aeroelastic Analysis  
**Enrico Santarpia, Aerospace Engineering (D)**

## Session C-16

Poster Interdisciplinary 10

**Friday, March 2, 2018, 12:30 pm**

Location: Montezuma Hall

- 376 12:30 pm NN**  
Amendment and Application of UN-Toolkit to San Diego State University's Climate Action Plan: The World's First  
**Christiana Yip, Public Health (U)**
- 377 12:30 pm OO**  
Cryptocurrency trends analysis using recurrent neural networks  
**Grigoli Vashakidze, Computer Engineer (U)**
- 378 12:30 pm PP**  
Levels of the Neonicotinoid Pesticide Imidacloprid in Forester Creek, San Diego County, CA  
**Samuel Anderson, Public Health (U)**
- 379 12:30 pm QQ**  
Pharmacodynamics Modeling of Drug Resistant HIV Latent Cells  
**Kunal Lalwani, Computational Science (M)**
- 380 12:30 pm RR**  
Effects of bacteriohemerythrin (BHR) overexpression on aerobic methane oxidation  
**Snehal Nariya, Microbiology (M)**

## Session C-17

Poster Physical and Mathematical Sciences 9

**Friday, March 2, 2018, 12:30 pm**

Location: Montezuma Hall

- 381 12:30 pm SS**  
Optimization of the Hydrogen Evolution Reaction via Nickel and Oxygen Co-Doped 1T-MoS<sub>2</sub> (NiO@1T-MoS<sub>2</sub>) Nanosheets and Black Silicon  
**Sabrina Younan, Chemistry (U)**
- 382 12:30 pm TT**  
The Thermodynamics of the Oxidation of Phenylenediamine  
**Ayla Buenaventura, Chemistry (U)**
- 383 12:30 pm UU**  
The Kinetics of the Oxidation of the Phenylenediamines  
**Tammy Pham, Chemistry (U)**

- 384 12:30 pm VV**  
Determining the lifetime for metronidazole derivative under mercury drop electrode  
**Mai Trang Nguyen, Chemistry (U)**
- 385 12:30 pm WW**  
Effect of Added Bases on the Redox-Responsive Dimerization of a 4 H-Bond Array containing a Phenylenediamine Redox Couple  
**Katrina Vuong, Chemistry (M)**
- 386 12:30 pm XX**  
Redox-Responsive Dimerization in a Ferrocene-Ureidopyrimidinone Supramolecular Assembly  
**Mario Cedano, Chemistry (M)**

## Session C-18

Poster Biological and Agricultural 6

**Friday, March 2, 2018, 12:30 pm**

Location: Montezuma Hall

- 387 12:30 pm YY**  
Enhancing In Vivo Lineage Reprogramming to Generate Replacement Beta Cells  
**Andrew Thomas, Biology (U)**
- 388 12:30 pm ZZ**  
Solstice therapeutics effect on mouse hematopoietic stem cells and progenitors  
**Gerardo Guzman, Biology (U)**
- 389 12:30 pm AAA**  
Characterization of Hair-Follicle Inducing Dermal Papilla Cells Derived From Human Pluripotent Stem Cells  
**Jasmin Hamidi, Biology (U)**
- 390 12:30 pm BBB**  
Optimizing iPSC Derivation into Human Pancreatic Precursor Cells  
**Joshua Sohmer, Biology (U)**
- 391 12:30 pm CCC**  
An induced pluripotent stem cell model to study mechanisms of non-alcoholic fatty liver disease associated with PNPLA3 polymorphisms in human hepatocytes  
**Hanna Storrostén, Biology (U)**

Please silence your cell phones and other devices.

(U) = Undergraduate; (M) = Masters; (D) = Doctoral

# Friday, March 2, 2018

## Session D: Poster Presentations

### Session D-9

Poster Health and Nutrition and Clinical Sciences 3

Friday, March 2, 2018, 2:15 pm

Location: Montezuma Hall

- 438 2:15 pm A**  
Impact of language barrier on the reporting and management of acute toxicities of radiotherapy in cervical cancer  
**Cristal Vieyra, Nursing (U)**
- 439 2:15 pm B**  
The Color of Brain Tumors: Do Genes Explain Disparities?  
**Giovanni Quichocho, Biochemistry (U)**
- 440 2:15 pm C**  
Awareness of Risk for Skin Cancer: Ethnic Group Differences  
**Hector Ramirez, Psychology (U)**
- 441 2:15 pm D**  
Novel Detection of Biomarkers of Pancreatic Cancer Using Microfluidics and Nonlinear Multi-Photon Laser Wave-Mixing Detector  
**Samantha Crawford, Chemistry, Biochemistry (U)**
- 442 2:15 pm E**  
Ultra Sensitive Detection of Cancer Biomarker CEA  
**Taylor Inouye, Chemistry (U)**
- 443 2:15 pm F**  
Cancer Immunotherapy Response Rates Across Ethnicity  
**Valeria Mejia, Biology (U)**

### Session D-10

Poster Biological and Agricultural 8

Friday, March 2, 2018, 2:15 pm

Location: Montezuma Hall

- 444 2:15 pm G**  
FACS analysis of microbial community dynamics on building materials  
**Ruby Tandon, Cell and Molecular Biology (M)**

- 445 2:15 pm H**  
The Effect of Sponges on Coral Reef Microbial Community Structure in Curacao  
**Brandie White, Cellular and Molecular Biology (D)**
- 446 2:15 pm I**  
The Role of ARID1B in Intellectual Disability  
**Nicholas Elliott, Cellular and Molecular Biology (U)**
- 447 2:15 pm J**  
Development of a low-cost murine aerosol delivery system  
**Priscila Rodriguez, Cellular and Molecular Biology (U)**
- 448 2:15 pm K**  
Transcriptional impact of CT26 secretion on RAW 264.7 cells TLR response  
**Charles Vallez, Cell and Molecular Biology (U)**
- 449 2:15 pm L**  
Metabolomic Analysis of the Secondary Effect of Compounds Found in Pre-Workout Energy Drinks  
**Javier Quintanilla, Biochemistry (U)**

### Session D-11

Poster Behavior and Social Sciences 14

Friday, March 2, 2018, 2:15 pm

Location: Montezuma Hall

- 450 2:15 pm M**  
Supplemental Instruction's Impact on Commuter Student Retention Rates  
**Timothy Heintz, Biology (U)**
- 451 2:15 pm N**  
The Misconception of Student Support Services within First-Generation, Low Income College Students  
**Ariana Hernandez, Psychology (U)**
- 452 2:15 pm O**  
Art Based Intervention for Students Identified with Emotional Disturbance who Experience Anxiety  
**Angela Cerda, School Psychology (M)**
- 453 2:15 pm P**  
Metacognition, English Learners, and the ACT  
**Stephen Bass, Masters in Critical Literacy and Social Justice (M)**



**454 2:15 pm Q**  
 Praxis and the Community: The Dignified Learning Project  
**Charlene Holkenbrink-Monk, Education (D)**

**455 2:15 pm R**  
 Indigenous Healing: Soul Retrieval  
**Natividad Cabrera, Multicultural Community Counseling Community Based Block (M)**

## Session D-12

Poster Physical and Mathematical Sciences 12  
**Friday, March 2, 2018, 2:15 pm**  
 Location: Montezuma Hall

**456 2:15 pm S**  
 Visualizing the Global Climate: The Global Climate Watchboard Application  
**Bryan Hayes, Applied Mathematics - Computational Science (U)**

**457 2:15 pm T**  
 Relationship Between Sea Surface Temperatures and Other Climatology Parameters  
**Kristine Dinh, Statistics (U)**

**458 2:15 pm U**  
 Are Littoral Cells from Central California Beaches Closed Systems? Insight from Detrital Heavy Mineral Distribution at Andrew Molera and El Capitan State Beaches  
**Arturo Gregor, Geology (U)**

**459 2:15 pm V**  
 Understanding Groundwater Variability: Modeling Groundwater Storage Change in Southern California  
**David Rother, Geography (M)**

**460 2:15 pm W**  
 Assessing the Environmental Impacts of Urban Agriculture in San Diego  
**Alyson Scurlock, Geography, Watershed Science (M)**

**461 2:15 pm X**  
 Winegrape Suitability for Southern California and Guadalupe Valley from the Perspective of a Regional Climate Model  
**Corrie Monteverde, Geography (M)**

## Session D-13

Poster Behavior and Social Sciences 15  
**Friday, March 2, 2018, 2:15 pm**  
 Location: Montezuma Hall

**462 2:15 pm Y**  
 Picture Naming in American Sign Language: an ERP study of the effects of iconicity  
**Meghan McGarry, Speech Language and Hearing Science (D)**

**463 2:15 pm Z**  
 Coping Mechanisms used by Latino youth with Asthma in the Respira Sano study  
**Janeth Juarez Padilla, Sociology (U)**

**464 2:15 pm AA**  
 Disparities in Exposure to Thirdhand Smoke Based on Socioeconomic Status and Ethnicity  
**Pamela Olguin, Chemistry (U)**

**465 2:15 pm BB**  
 Locomotor Response to Methylphenidate in C57BL/6J x FVB/NJ F2 Hybrid Mice with Prenatal Alcohol Exposure  
**Ami Ikeda, Psychology (M)**

**466 2:15 pm CC**  
 Examining the Relationship between Feedback Negativity and Depression using Fast-Fourier Transformed EEG Data  
**Lucia Nhan, Psychology (U)**

**467 2:15 pm DD**  
 Differential Effects of Gender on Hunger and Satiety Hormones in Middle Aged Adults  
**Ilex Beltran-Najera, Psychology (U)**

## Session D-14

Poster Biological and Agricultural 9  
**Friday, March 2, 2018, 2:15 pm**  
 Location: Montezuma Hall

**468 2:15 pm EE**  
 Examining Autophagy Dysregulation in Duchenne Muscular Dystrophy Human Stem Cell Derived Skeletal Muscle  
**Alvin Muliono, Mechanical Engineering-Bioengineering (U)**

Please silence your cell phones and other devices.

(U) = Undergraduate; (M) = Masters; (D) = Doctoral

- 469 2:15 pm FF**  
The Effects of Estrogen (Ethinyl Estradiol) on the Gut Microbiome  
**Myedith Damba, Biochemistry (U)**
- 470 2:15 pm GG**  
Spider Silk-Silica Nanocomposite Materials- An Adsorption Study  
**Nikki Peters, Chemistry (U)**
- 471 2:15 pm HH**  
Title: Prostate Cancer Screening in African-American Men: Rates and Barriers  
**Hodo Haybe, Environmental Sciences (U)**
- 472 2:15 pm II**  
Data Mining of Two Large Transcriptomic Datasets that utilize Drosophila as a model System for the study of Neurodegeneration due to Aging and Trauma  
**Sharon Zhang, Bioinformatics and Medical Informatics (M)**

## Session D-15

Poster Behavior and Social Sciences 16

**Friday, March 2, 2018, 2:15 pm**

Location: Montezuma Hall

- 473 2:15 pm JJ**  
Language output monitoring in sign production: an electroencephalography study  
**Linda Nadalet, Speech Language and Hearing Sciences (U)**
- 474 2:15 pm KK**  
Phonological Priming in American Sign Language: An ERP Study  
**Natasja Massa, Speech, Language and Hearing Sciences (U)**
- 475 2:15 pm LL**  
Reduced Activation in Individuals At-Risk for Alzheimer's Disease during Odor Recognition Tasks  
**Jeremea Songco, Psychology (U)**
- 476 2:15 pm MM**  
Does Odor Familiarity Predict Conversion from Mild Cognitive Impairment to Alzheimer's Disease?  
**Paul Wheeler, Psychology (M)**

- 477 2:15 pm NN**  
Body Image among Adult Survivors of Childhood and Adolescent Cancer  
**Vanessa De Cambra Ocampo, Biology (U)**
- 478 2:15 pm OO**  
The Role of Working Memory and Cognitive Control in Online Sentence processing: Evidence from bilingualism  
**Margo Taylor, Speech Language and Hearing Sciences (U)**
- 479 2:15 pm PP**  
Executive Function and Translation Equivalents in Young Spanish-English Bilingual Children  
**Anele Villanueva, Child and Family Development (U)**

## Session D-16

Poster Behavior and Social Sciences 17

**Friday, March 2, 2018, 2:15 pm**

Location: Montezuma Hall

- 480 2:15 pm QQ**  
Good-bye ANOVA and Hello SEM: Using Structural Equation Models in Place of Analysis of Variance  
**Ayn Hatfield, Psychology (U)**
- 481 2:15 pm RR**  
My Analysis on Repeat: Using Structural Equation Models to Perform Repeated Measures Analysis of Variance  
**Saba Tavoosi, Psychology (U)**
- 482 2:15 pm SS**  
Dust Yourself Off and Try Anew: Replicating Multivariate Analysis of Variance Through Structural Equation Modeling  
**Justine Poulin, Statistics (U)**
- 483 2:15 pm TT**  
Taste Perception and Habitual Caffeine Use: A fMRI Study  
**Eleni Kapoulea, Psychology (M)**
- 484 2:15 pm UU**  
Latent Class Analysis of Racial Attitudes  
**Angela Horvath, Social Work (M)**



- 485 2:15 pm VV**  
Distribution of Drinking Patterns Over Time in Selectively Bred Alcohol-Preferring (P) Rats Exposed to a 20% Ethanol Intermittent Access Paradigm  
**Jordana Breton, Psychology (U)**

## Session D-17

Poster Interdisciplinary 13

**Friday, March 2, 2018, 2:15 pm**

Location: Montezuma Hall

- 486 2:15 pm WW**  
Synthesis and Characterization of Spider Venom and Silk Peptide Mimics  
**Nisrin Samsum, Chemistry (U)**
- 487 2:15 pm XX**  
Shadowing in the Manual Modality  
**Karina Maralit, Speech Language Hearing Sciences (U)**
- 488 2:15 pm YY**  
FRET assay to monitor the binding between p50 homodimer and IkappaB-zeta  
**Stephanie Feliciano, Biochemistry (U)**
- 489 2:15 pm ZZ**  
Blue light as an antimicrobial armamentarium  
**Paulina Cortez, Biology, Cellular and Molecular (U)**
- 490 2:15 pm AAA**  
Direction and Modality Sensitivity of Walking Balance to Visual Perturbations  
**Paula Baluyut, Kinesiology (U)**
- 491 2:15 pm BBB**  
Conversion of a Weak Three H-Bond Dimer to a Strong Three H-Bond Dimer Using Electron Transfer Induced Proton Transfer  
**Hyejeong Choi, Chemistry - Biochemistry (M)**

## Friday, March 2, 2018 Session E: Poster Presentations

### Session E-1

Poster Health and Nutrition and Clinical Sciences 4

**Friday, March 2, 2018, 4:00 pm**

Location: Montezuma Hall

- 492 4:00 pm A**  
BMI is Associated with Perceived Pleasantness of Sweet and Fatty Solutions  
**Morgan Marvin, Psychology (U)**
- 493 4:00 pm B**  
A fast-start pacing strategy does not improve locomotor fatigue dynamics but does improve supra-critical power work capacity  
**Abby Villacarlos, Exercise Physiology (M)**
- 494 4:00 pm C**  
Moderation of Postprandial Glucose Responses to Single, Short Exercise Bouts by Fitness and Sex  
**Jeff Moore, Exercise Physiology, Nutritional Sciences (M)**
- 495 4:00 pm D**  
The Acute Effect of Moderate Intensity Stair Climbing on Postprandial Blood Glucose  
**Cameron Vinoskey, Exercise Physiology and Nutritional Science (M)**
- 496 4:00 pm E**  
Sex differences in postprandial glucose response to short bouts of exercise  
**Eric Bartholomae, Exercise Physiology and Nutritional Sciences (M)**
- 497 4:00 pm F**  
Association between habitual sleep patterns and endogenous pain modulation in people with and without chronic spine pain  
**Sonnen Olson, Physical Therapy (D)**

Please silence your cell phones and other devices.

(U) = Undergraduate; (M) = Masters; (D) = Doctoral

## Session E-2

Poster Engineering and Computer Science 10

**Friday, March 2, 2018, 4:00 pm**

Location: Montezuma Hall

- 498 4:00 pm G**  
A New Website for Seamless Navigation of the Argo Data Set  
**Tyler Tucker, Applied Mathematics (M)**
- 499 4:00 pm H**  
Experimental Study of Radio Frequency Energy Harvesting Internet of Things  
**Julia Cai, Computer Science (U)**
- 500 4:00 pm I**  
Experimental Study of Wireless Quality of Service Performance on Windows and Macintosh Devices in Realistic Settings  
**Edwin Perez, Computer Science (U)**
- 501 4:00 pm J**  
SDSU Schedule  
**Luka Chkhetiani, Electrical Engineering (U)**
- 502 4:00 pm K**  
Deep Learning Wildfire prediction  
**Shota Amashukeli, Computer-Engineering (U)**
- 503 4:00 pm L**  
Handwritten Optical Image Recognition of non-Latin characters  
**Davit Soselia, Computer Engineering (U)**

## Session E-3

Poster Biological and Agricultural 10

**Friday, March 2, 2018, 4:00 pm**

Location: Montezuma Hall

- 504 4:00 pm M**  
Capsicum annum's Potential as an Anticancer Treatment  
**Paula Bejar, Biology (U)**
- 505 4:00 pm N**  
Phylogenetic Relationships Among Iguanid Genera and the Evaluation of Discordance between the Mitochondrial and Nuclear Genomes  
**Kimberly Cole, Biology (U)**

- 506 4:00 pm O**  
The Effects of Water Table and Thaw Depth Levels on Carbon Dioxide and Methane Fluxes in the Arctic  
**Bahar Sabouri, Biology (U)**
- 507 4:00 pm P**  
Identifying Novel UNC-45 Interacting Partners in Drosophila  
**Mark Sanders, Biology (U)**
- 508 4:00 pm Q**  
GIV Regulates Downstream Integrin Signaling and Focal Adhesion Formation  
**Navin Rajapakse, Biology (U)**
- 509 4:00 pm R**  
A Closer Look at the Skin of Sharks  
**Taylor Dillon, Marine Biology (U)**

## Session E-4

Poster Physical and Mathematical Sciences 13

**Friday, March 2, 2018, 4:00 pm**

Location: Montezuma Hall

- 510 4:00 pm S**  
From Mars to Medicine: A Closer Look Into Boron Nitride Nanotubes  
**Joe Olivieri, Biology (U)**
- 511 4:00 pm T**  
Kinetics of Histidine Induced Silver Nanoparticle Aggregation  
**Josiah Smith, Chemistry (U)**
- 512 4:00 pm U**  
Modification and application of nanopore Black Silicon  
**Michael Fairchild, Chemistry (U)**
- 513 4:00 pm V**  
Effects of Halide Salts on Citrate Capped Silver Nanoparticles  
**Zachary Smith, Chemistry Bachelor of Science (U)**
- 514 4:00 pm W**  
Unexpected Dependence of Silver Nanoparticle Synthesis on the Rate of Reactant Mixing  
**Bernice Villa-Real, Biochemistry (U)**

- 515 4:00 pm X**  
 Identification of Ligands Bound to Silver  
 Nanoparticle Surfaces by Raman Spectroscopy  
**Joe Sanchez, Chemistry (U)**

## Session E-5

Poster Behavior and Social Sciences 18  
**Friday, March 2, 2018, 4:00 pm**  
 Location: Montezuma Hall

- 516 4:00 pm Y**  
 Public Health Framing of Intimate Partner Violence  
 Media Portrayals in Heterosexual  
 and Homosexual Contexts  
**Tava Espinoza, Health Communication (U)**
- 517 4:00 pm Z**  
 Substance Use Among Latinx Lesbian, Gay,  
 and Bisexual Adults  
**Gilberto Barajas, Psychology (U)**
- 518 4:00 pm AA**  
 Structural brain changed in young adult  
 binge drinkers  
**Jessica Houghton, Psychology (U)**
- 519 4:00 pm BB**  
 Contraceptive Use and Barriers to Reproductive  
 Care among female sex workers in the Mexico-  
 US border region  
**Shania Bennett, Biology (U)**
- 520 4:00 pm CC**  
 Lung Cancer Detection, Treatment, or  
 Survivorship: Does Patient Navigation  
 make a Difference?  
**Vanessa Arellano, Psychology (U)**
- 521 4:00 pm DD**  
 Discrepancies in perceptions of colorectal cancer  
 screening and willingness to screen among  
 Federally Qualified Health Center staff and  
 Latino community members  
**Elizabeth Alpert, Psychology (M)**

## Session E-6

Poster Biological and Agricultural 11  
**Friday, March 2, 2018, 4:00 pm**  
 Location: Montezuma Hall

- 522 4:00 pm EE**  
 Evaluation of Macrophage mRNA Expression  
 after Conditioned Cancer Media Treatments  
**Warsan Artan, Biology - Political Science (U)**
- 523 4:00 pm FF**  
 Diversity of methanotrophic bacteria in  
 California Coastal prairies  
**Brianna Anaya, Biology (U)**
- 524 4:00 pm GG**  
 Integrating bHLH Repressors into the Midline  
 regulatory network  
**Zachary Ip, Biology (U)**
- 525 4:00 pm HH**  
 Searching for UNC-45 Gene Interacting  
 Partners Using CRISPR  
**Danitza Loya, Biology (U)**
- 526 4:00 pm II**  
 Effects of Moderate Voluntary Ethanol  
 Consumption on the Rat and Human  
 Gut Microbiome  
**Natalie Pinkowski, Biology (U)**

## Session E-7

Poster Behavior and Social Sciences 19  
**Friday, March 2, 2018, 4:00 pm**  
 Location: Montezuma Hall

- 527 4:00 pm JJ**  
 Health Literacy and Healthcare Utilization in  
 Latino/Hispanic Populations with Chronic  
 Health Conditions  
**Ivette G. Gimenez-Torres, Psychology (U)**
- 528 4:00 pm KK**  
 Cultural Explanatory Models of Cancer:  
 From the Imperial Valley to Osaka, Japan  
**Fernanda Figueroa, Psychology (U)**

Please silence your cell phones and other devices.

(U) = Undergraduate; (M) = Masters; (D) = Doctoral

- 529 4:00 pm LL**  
Understanding the gaps in Hospice Care referral:  
From the caregivers' perspective in the  
USA-Mexico Border  
**Dianna Hurtado, Multiple Subject Credential  
Program (M)**
- 530 4:00 pm MM**  
Latinos Understanding the Need for Adherence  
Study: Cross- sectional Analysis of Depressive  
Symptoms and Body Mass Index  
**Jasmine Carey, Interdisciplinary Studies (U)**
- 531 4:00 pm NN**  
Disaggregating Cancer Burden by  
Hispanic Ethnicity  
**Steven Zamora, Public Health Epidemiology (M)**
- 532 4:00 pm OO**  
The relationship between body mass index  
and number of falls experienced by older adults  
in Mexico  
**Joseline Franco, Public Health - Biometry (M)**

## Session E-8

Poster Physical and Mathematical Sciences 14

**Friday, March 2, 2018, 4:00 pm**

Location: Montezuma Hall

- 533 4:00 pm PP**  
Atroposelective Alkylation of Diaryl Ethers via  
Dynamic Kinetic Resolution  
**Amy Jackson, Chemistry (U)**
- 534 4:00 pm QQ**  
New Synthetic Method of N-Heterocyclic Carbenes  
**Daniel Cassaro, Chemistry (U)**
- 535 4:00 pm RR**  
A Nucleophilic Atroposelective Kinetic Resolution  
of Selective Pyrrolopyrimidine Kinase Inhibitors  
**Tiffany Duong, Biology (U)**
- 536 4:00 pm SS**  
Computational Studies of Catalyst-Controlled  
Regioselective Chlorination of Phenols  
**Lalena Janke, Chemistry (U)**

## Session E-9

Poster Behavior and Social Sciences 20

**Friday, March 2, 2018, 4:00 pm**

Location: Montezuma Hall

- 537 4:00 pm TT**  
Negative Affect Surveillance of Twitter  
**Ilana Goldflam, Linguistics (M)**
- 538 4:00 pm UU**  
Lexical Access and Organization of Language  
in Monolingual and Bilingual 18-Month-Olds  
**Lauren Thayer, Psychology (U)**
- 539 4:00 pm VV**  
The Relationship Between Executive Function  
and Language Skills in Bilingual Children  
**Mackenzie Hurley, Speech, Language, and  
Hearing Sciences (U)**
- 540 4:00 pm WW**  
Effects of Social Media Addiction on  
Self-Esteem and Friendship Satisfaction  
**Paola Vicencio, Psychology (U)**
- 541 4:00 pm XX**  
The Effect of Tattoos on Employment  
**Jasmine Nguyen, Marketing (U)**
- 542 4:00 pm YY**  
Using smartphones to train cognitive control  
processes: will we promote aphasia recovery?  
**Kimaya Desai, Computer Science (M)**

## Session E-10

Poster Interdisciplinary 14

**Friday, March 2, 2018, 4:00 pm**

Location: Montezuma Hall

- 543 4:00 pm ZZ**  
Intrapersonal Barriers and Facilitators to  
Cervical Cancer Screening of Women with  
HIV in Surat, India  
**Asha Abdullahi, Political Science -  
Public Health (U)**

- 544 4:00 pm AAA**  
 A qualitative exploration of the substance use continuum from initiation to treatment among transgender and gender nonconforming young adults  
**Cassandra Morales, Public Health (U)**
- 545 4:00 pm BBB**  
 Perceived Stress and Quality of Life in older Persons Living with HIV  
**Vanessa Serrano, Psychology (U)**
- 546 4:00 pm CCC**  
 How Transparent is American Sign Language to Non-Signers?  
**Lucyl Florencio, Speech, Language, and Hearing Sciences (U)**
- 547 4:00 pm DDD**  
 Seasonal and Spatial Distribution of Particle-bound Polycyclic Aromatic Hydrocarbon in San Ysidro, CA  
**Rachelle De Ocampo, Public Health (U)**
- 548 4:00 pm EEE**  
 Structural Revision and Total Synthesis of the Correct Enantiomeric Form of Micromide, a Highly Potent Anti-Tumor Agent from Cyanobacteria  
**Ann Baac, Chemistry (ACS) (U)**





## Acknowledgements

Our thanks and appreciation to the following individuals, units and groups for their support of student involvement in research, scholarship and creative activities.



**SAN DIEGO STATE  
UNIVERSITY**

## Administration

Sally Roush, President  
 Chukuka S. Enwemeka, Provost and Senior Vice President  
 Stephen Welter, Vice President for Research  
 and Dean of Graduate Affairs  
 Mary Ruth Carleton, Vice President for  
 University Relations and Development  
 Eric Rivera, Vice President for Student Affairs  
 Rick Gulizia, Director, Division of Research Affairs

## Colleges

Norma Bouchard, Dean, College of Arts and Letters  
 Lance Nail, Dean, Fowler College of Business  
 Gale Etschmaier, Dean, Library and Information Access  
 Joyce M. Gattas, Dean, College of Professional  
 Studies and Fine Arts  
 Joseph F. Johnson, Dean, College of Education  
 Stanley Maloy, Dean, College of Sciences  
 Morteza M. Mehrabadi, Dean, College of Engineering  
 Larry Verity, Interim Dean, College of Health  
 and Human Services  
 Gregorio Ponce, Dean, Imperial Valley Campus  
 Joseph Shapiro, Dean, College of Extended Studies  
 Stephen Welter, Vice President for Research and  
 Dean, Graduate Division

## Student Research Committee

Keven Jeffery, Library  
 Robert Meffe, Musical Theater  
 Jessica Pressman, English & Comparative Literature  
 Patricia Geist-Martin, Communication  
 Jerry Orosz, Astronomy  
 Satish Sharma, Electrical & Computer Engineering  
 Catherine Terrones, University Relations and Development  
 Emilio Ulloa, Psychology  
 Iana Castro, Marketing  
 Morgan Poor, Marketing  
 Stephen Schellenberg, Undergraduate Studies  
 Diane Smith, Chemistry  
 Kathleen Sweetser, School of Journalism and Media Studies  
 Congcong Zheng, Management  
 Susan Kaiser

Ed Beasley (CHAIR), History  
 Zohir Chowuate and Researchdhury, Public Health  
 Rick Gulizia  
 Meredith Houle Vaughn, Teacher Education  
 Murray Jennex, Information and Decision Systems  
 Paul Kaplan, Criminal Justice  
 Fletcher Miller, Mechanical Engineering

## Space, Logistics and Publicity Assistance

Ashley Rubio, SRS Coordinator, Research Affairs  
 Matt Brown, Graduate Affairs  
 Joshua Jones, Graduate Affairs  
 Derek Davila, Graduate Affairs  
 Christine Cook, Division of Research Affairs  
 Anne Dodge-Schwanz, Division of Research Affairs  
 Flora Elman, Associated Students  
 Bridget Frattalone, Division of Research Affairs  
 Pat Gordon, Division of Research Affairs  
 Samir Hafez, Division of Research Affairs  
 Zena Hovda, Division of Research Affairs  
 Lisa Kath, Director of Undergraduate Research  
 and Creative Activities  
 Justin Dean, Division of Research Affairs  
 Jonathan Rubio, Arey Jones Educational Solutions  
 Monika Lemp, Instructional Technology Services  
 Tom Voss, Library and Information Access

## Mentors

Eve Kornfeld	College of Arts and Letters
William Nericcio	College of Arts and Letters
Daniel Smith	College of Sciences
Linda Abarbanell	Imperial Valley Campus
Brian Adams	College of Arts and Letters
Hector Alcala	College of Health and Human Services
Amirhossein Alimohammad	College of Engineering
Nader Amir	College of Sciences
Ken Arnold	College of Engineering
Ashkan Ashrafi	College of Engineering
Pierre Asselin	College of Arts and Letters
Andrew Baker	College of Business Administration
Arlette Baljon	College of Sciences



Steven Barbone	College of Arts and Letters	Noe Crespo	College of Health and Human Services
Jessica Barlow	College of Health and Human Services	Thereasa Cronan	College of Sciences
Harsimran Baweja	College of Health and Human Services	Tinatín Davitashvili	College of Engineering
Mikael Bergdahl	College of Sciences	Matt De La Pena	College of Arts and Letters
Sanford Bernstein	College of Sciences	Fernando De Sales	College of Arts and Letters
Annalisa Berta	College of Sciences	Luciano Demasi	College of Engineering
Subrata Bhattacharjee	College of Engineering	Elizabeth Dinsdale	College of Sciences
Trent Biggs	College of Arts and Letters	Gabriel Doyle	College of Arts and Letters
Aaron Blashill	College of Sciences	Marie Draz	College of Arts and Letters
Henrike Blumenfeld	College of Health and Human Services	Robert Edwards	College of Sciences
Eric Boime	Imperial Valley Campus	Karen Emmorey	College of Health and Human Services
Nicole Bracy	College of Professional Studies and Fine Arts	Kristen Emory	College of Health and Human Services
Susan Brasser	College of Sciences	Chukuka Enwemeka	College of Health and Human Services
Kristen Breit	College of Sciences	Katie Farris	College of Arts and Letters
Marilee Bresciani Ludvik	College of Education	Stacy Feinberg	College of Sciences
Chris Brozdowski	College of Health and Human Services	Jennifer Felner	College of Health and Human Services
Violet Bumah	College of Sciences	Ralph Feuer	College of Sciences
Michael Buono	College of Health and Human Services	Tracy Finlayson	College of Health and Human Services
Nola Butler-Byrd	College of Education	Kim Finley	College of Sciences
Jerel Calzo	College of Health and Human Services	Douglas Fisher	College of Education
Jerel Calzo	College of Health and Human Services	Delores Fisher	College of Arts and Letters
Joaquin Camacho	College of Engineering	Inna Fishman	College of Sciences
Daniel Cannon	College of Health and Human Services	Erica Forsberg	College of Sciences
Marva Cappello	College of Education	Robert Francescotti	College of Arts and Letters
Ruth Carper	College of Sciences	John Francis	College of Business Administration
Carl Carrano	College of Sciences	Margaret Friend	College of Sciences
Donna Castañeda	Imperial Valley Campus	Linda Gallo	College of Sciences
Joshua Chanin	College of Professional Studies and Fine Arts	Temesgen Garoma	College of Engineering
Giorgi Chelidze	College of Sciences	Lisa Gates	College of Education
Jung Choi	College of Arts and Letters	Patricia Geist-Martin	College of Professional Studies and Fine Arts
Zohir Chowdhury	College of Health and Human Services	Richard Gersberg	College of Health and Human Services
Rulon Clark	College of Sciences	Huma Ghosh	College of Arts and Letters
David Cline	College of Arts and Letters	Paul Gilbert	College of Sciences
Thomas Cole	College of Sciences	Jérôme Gilles	College of Sciences
Clare Colquitt	College of Arts and Letters	Charles Goehring	College of Professional Studies and Fine Arts
Andrew Cooksy	College of Sciences	Douglas Grotjahn	College of Sciences
J. Angelo Corlett	College of Arts and Letters	Jing Gu	College of Sciences
Heather Corliss	College of Health and Human Services	Natalie Gude	College of Sciences
Erlinde Cornelis	College of Business Administration	Jeffrey Gustafson	College of Sciences

Gabriel Gutierrez	College of Education	Richard Levine	College of Sciences
Rachel Haine-Schlagel	College of Education	Changqi Liu	College of Health and Human Services
Christopher Harrison	College of Sciences	Jeremy Long	College of Sciences
Kate Hattrup	College of Sciences	Tracy Love	College of Health and Human Services
Jonathan Helm	College of Sciences	John Love	College of Sciences
Mieko Hirabayashi	College of Engineering	Antoni Luque	College of Sciences
Eunha Hoh	College of Health and Human Services	Catherina Madani	College of Health and Human Services
Phillip J. Holcomb	College of Sciences	Kristen Maher	College of Arts and Letters
Gregory Holland	College of Sciences	Vanessa Malcarne	College of Sciences
Mee Young Hong	College of Sciences	Saúl Isaac Maldonado	College of Education
Shirin Hooshmand	College of Health and Human Services	Seth Mallios	College of Arts and Letters
DJ Hopkins	College of Professional Studies and Fine Arts	Jillian Maloney	College of Sciences
Kevin Hovel	College of Sciences	Katrina Maluf	College of Health and Human Services
Tom Huxford	College of Sciences	Adam Manley	College of Professional Studies and Fine Arts
Colette Ingraham	College of Education	Ksenija Marinkovic	College of Sciences
Gustaaf Jacobs	College of Engineering	Karen May-Newman	College of Engineering
Arash Jahangiri	College of Engineering	Shaan McGhie	College of Sciences
David Jancsics	Imperial Valley Campus	Kathleen McGuire	College of Sciences
Calvin Johnson	College of Sciences	Hilary McMillan	College of Arts and Letters
Naveen K. Vaidya	College of Sciences	Robert Meffe	College of Professional Studies and Fine Arts
Aram Kalhori	College of Sciences	Todd Meyers	College of Arts and Letters
Marina Kalyuzhnaya	College of Sciences	Katherine Midgley	College of Sciences
Samuel Kassegne	College of Engineering	Fletcher Miller	College of Engineering
Lisa Kath	College of Sciences	Jong Won Min	College of Health and Human Services
Ranin Kazemi	College of Arts and Letters	Natalie Mladenov	College of Engineering
Scott Kelley	College of Sciences	Alan Mobley	College of Professional Studies and Fine Arts
Susan Kiene	College of Health and Human Services	Eileen Moore	College of Sciences
David Kimbrough	College of Sciences	Ralph-Axel Müller	College of Sciences
Alicia Kinoshita	College of Engineering	Claire Murphy	College of Sciences
Eunjeong Ko	College of Health and Human Services	Atsushi Nara	College of Arts and Letters
Jochen Kressler	College of Health and Human Services	Robert Nelson	College of Sciences
Matthew Kuefler	College of Arts and Letters	Ignatius Nip	College of Health and Human Services
Ahmet Kuru	College of Arts and Letters	Joey Nunez Estrada	College of Education
David Larom	College of Sciences	Cheryl O'Brien	College of Arts and Letters
Mark Laumakis	College of Sciences	Shawn O'Connor	College of Health and Human Services
Vanja Lazarevic	College of Education	Cezar Ornatowski	College of Arts and Letters
Young-Shin Lee	College of Health and Human Services	Yusuf Ozturk	College of Engineering
Kangoh Lee	College of Arts and Letters	Cynthia Park	College of Education
Jillian Lee Wiggins	College of Sciences		

Sandip Patel	College of Sciences	Carl Tedesco	College of Engineering
Ramona Perez	College of Arts and Letters	Dustin Thoman	College of Sciences
Karen Peterson	College of Sciences	Jennifer Thomas	College of Sciences
Giang Pham	College of Health and Human Services	Joseph Thomas	College of Arts and Letters
Joy Phillips	College of Sciences	Caroline Thompson	College of Health and Human Services
Dena Plemmons	College of Sciences	William Tong	College of Sciences
Elizabeth Pollard	College of Arts and Letters	Nellie Tran	College of Education
Jessica Pressman	College of Arts and Letters	Timothy Trombley	College of Business Administration
Sonja Pruitt-Lord	College of Health and Human Services	Magda Tsintsadze	College of Engineering
David Pullman	College of Sciences	Ming-Hsiang Tsou	College of Arts and Letters
Byron Purse	College of Sciences	Katherine Turner	College of Sciences
Mitchell Rauh	College of Health and Human Services	Isaac Ullah	College of Arts and Letters
Rachel Record	College of Professional Studies and Fine Arts	Emilio Ulloa	College of Sciences
Elizabeth Reed	College of Health and Human Services	Lianne Urada	College of Health and Human Services
Mark Reed	College of Health and Human Services	Alfredo Urzua	College of Arts and Letters
Tod Reeder	College of Sciences	Naveen Vadiya	College of Sciences
Stephanie Ries-Cornou	College of Health and Human Services	Faramarz Valafar	College of Sciences
Forest Rohwer	College of Sciences	Marissa Vasquez	College of Education
Kate Rubin	College of Sciences	Allison Vaughn	College of Sciences
Eric Sandquist	College of Sciences	Satchi Venkataraman	College of Engineering
Matthew Savage	College of Professional Studies and Fine Arts	Ken Walsh	College of Engineering
Melody Schiaffino	College of Health and Human Services	Wei Wang	College of Sciences
Phillip Serrato	College of Arts and Letters	Kristen Wells	College of Sciences
Argentina Servin	College of Health and Human Services	Megan Welsh	College of Professional Studies and Fine Arts
Zed Sevcikova	College of Health and Human Services	William Welsh	College of Sciences
Satish K. Sharma	College of Engineering	Dan Werb	College of Health and Human Services
Samuel Shen	College of Sciences	Mark Wheeler	College of Arts and Letters
Alexander Shengelaia	College of Sciences	Roger Whitney	College of Sciences
Nicholas Shikuma	College of Sciences	Jillian Wiggins	College of Sciences
Eric Smigel	College of Professional Studies and Fine Arts	Roland Wolkowicz	College of Sciences
Diane Smith	College of Sciences	J. Luke Wood	College of Education
Christal Sohl	College of Sciences	Mingan Yang	College of Health and Human Services
William Stumph	College of Sciences	May Yeh	College of Sciences
Mark Sussman	College of Sciences	George Youssef	College of Engineering
Manal Swairjo	College of Sciences	William Zahner	College of Sciences
Gregory Talavera	College of Health and Human Services	Ricardo Zayas	College of Sciences
Mauro Tambasco	College of Sciences	Robert Zeller	College of Sciences
		Congcong Zheng	College of Business Administration
		Maria Luisa Zuniga	College of Health and Human Services

## SPONSORS

The following organizations donate the funds and services that make the Student Research Symposium possible.

**The Aztec Parents Fund** helps create quality student programs and services that directly benefit SDSU students.

**Associated Students** is an independent student-directed corporation that is one of the largest student governance organizations in the CSU system. As an affiliate of San Diego State University, the programs and facilities A.S. manages are enjoyed by students, faculty, staff and the SDSU Community.

**Instructional Technology Services (ITS)** provides support and leadership to the university in the effective uses of technologies for enhancing learning as well as facilitating research and strategic initiatives.

### **Division of Student Affairs SDSU Ambassadors**

The SDSU Ambassadors are the official student representatives, tour guides, and orientation leaders of San Diego State University.

**The Division of Undergraduate Studies** promotes student success by providing for all undergraduate students specific academic pathways to world-class intellectual resources and transformative experiences.

**The Undergraduate Research Program (URP)** provides faculty with mini-grants to support student participation in undergraduate research, scholarship, or creative activities (URSCA). Faculty serve as mentors, seminar leaders, and/or General Studies 490 instructors. Mini-grant funded projects support students to meet URSCA learning outcomes and present their work to peers and faculty in campus, regional, or international forums.

**The Library and Information Access** supports the information, curricular and research needs of the university's diverse community through the widest possible range of resources.

**Scholars Without Borders** is an honorary society dedicated to promoting international exchange and service and recognizing scholarly achievement in an international context. Membership is open to international and U.S. undergraduate and graduate students who meet the minimum GPA requirements.

**The Fu Foundation** is a tax-exempt, non-profit educational foundation that promotes the intercultural and interdisciplinary work of Dr. Charles Wei-hsun Fu (1933-1996), scholar and teacher, in globalizing the horizons of philosophers.

**The Compact Scholars Program** is the postsecondary component of the Compact for Success – a partnership between the Sweetwater Union High School District and San Diego State University. The program supports student success by connecting participants to the rich resources of the San Diego State campus community.

### **Special thanks to:**

Academic Deans  
Associated Students  
Aztec Parent Fund  
Aztec Shops  
Graduate and Research Affairs  
Honors Council  
Instructional Technology Services  
Library and Information Access  
Office of the President  
Office of the Provost  
Physical Plant  
President's Leadership Fund  
Reprographics  
SDSU Research Foundation  
Undergraduate Studies  
University Relations and Development  
University Ambassadors

For additional information about the SDSU Student Research Symposium, please contact:

### **The Division of Research Affairs**

#### **Graduate and Research Affairs**

5500 Campanile Drive, MC 1933  
San Diego State University  
San Diego, CA 92182

**Telephone:** 619.594.5938

**E-mail:** dra@mail.sdsu.edu

#### **Research Affairs Website:**

[http://research.sdsu.edu/research\\_affairs](http://research.sdsu.edu/research_affairs)

**SRS Website:** [http://research.sdsu.edu/research\\_affairs/student\\_research\\_symposium](http://research.sdsu.edu/research_affairs/student_research_symposium)







SAN DIEGO STATE  
UNIVERSITY

---

*Leadership Starts Here*

**Eleventh Annual Student Research Symposium**  
**March 2 and 3, 2018**