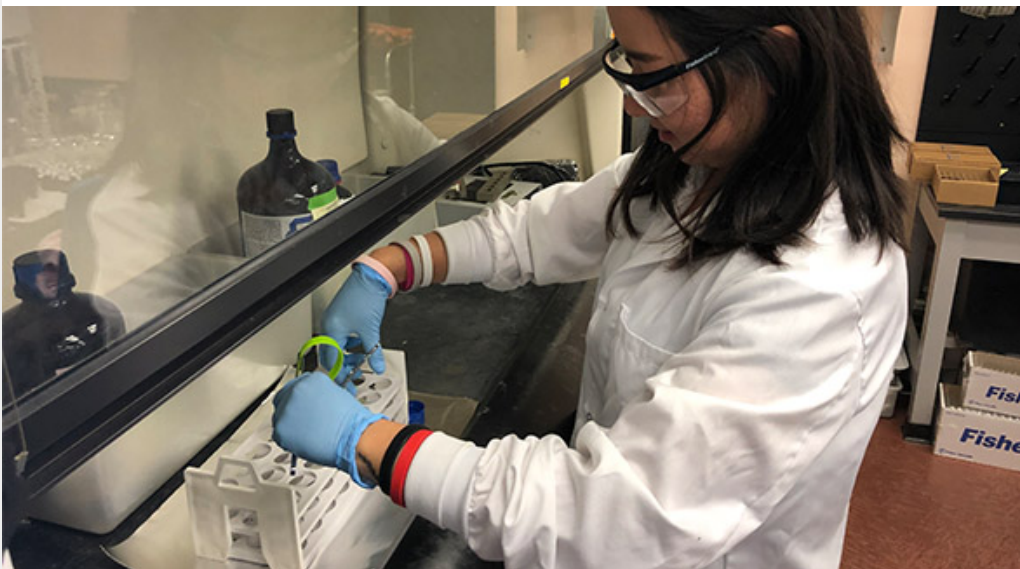


Gigantic Remnant Near Exploding Star Discovered

SDSU professor helps discover precursors to the tools we use to map the universe. [Read more.](#)



New Way to Measure Nicotine Exposure

A team of SDSU researchers has found silicone wristbands to be an effective way to measure children's exposure to second-hand smoke. [Read more.](#)



New Frontiers in Personalized Medicine

Dwayne Roach's research in the field strengthens the capacity of SDSU's Viral Information Institute. [Read more.](#)

Congratulations

The 2019 [Albert W. Johnson University Research Lecture](#) will be delivered by **Chris Glembotski**, Professor of Biology.

Glembotski's lecture "Don't Gamble with Heart Disease: You've Got to Know When to Fold 'Em" will take place **Friday, March 29**, at 3 p.m. in Storm Hall West, Room 11, with a reception to follow.

"Dr. Glembotski is exactly the kind of professor that sets SDSU apart," said Stephen Welter, vice president for research and graduate affairs. "His critical research advancing the field of heart disease, combined with his commitment to mentoring the next generation of scientists, is a true credit to this institution."

Read more about Dr. Glembotski's current research in [NewsCenter](#).

In the News



[A Light for Me in the Darkness': For Migrant Detainees, a Bond Forged by Letter](#)

The New York Times reports that SDSU researchers are digitizing letters from

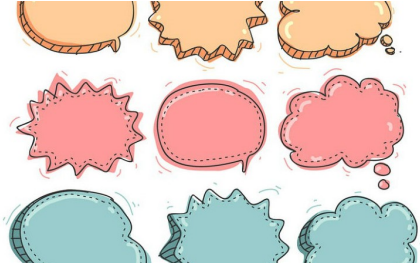


[How Worried Do You Really Need to Be About Your Screen Time?](#)

Jean Twenge talks to *Self* about the vast and mostly negative effects that screens

asylum seekers detained along the border and developing a report cataloging accounts of mistreatment.

—phones, for the most part—have had on adolescents.



Detecting language problems: a tech-assisted vision for earlier diagnosis

Verdict highlights an SDSU team that is using advanced computerized comprehension tasks to detect language problems in children.

Movies Featured More Female Protagonists in 2018, but It's Not All Good News

Variety reports that the percentage of films featuring female protagonists rose to 31 percent, according to a study out of the SDSU Center for the Study of Women in Television and Film.

Featured Video

With promising early results, SDSU molecular cardiologist and 2019 recipient of the Albert W. Johnson University Research Lectureship **Chris Glembotski** hopes continued research on a treatment he developed for heart attacks will lead to clinical trials.



Video: Heart Institute Discovery Holds Promise for New Drug Therapy

Events

The 2019 Student Research Symposium will take place this



Friday and Saturday, March 1 and 2, in the Conrad Prebys Aztec Student Union. Nearly 500 undergraduate and graduate students will present their research. SRS is a great entry point for students who are interested in research, so please encourage your students to attend.

[Learn More](#)

SDSU is hosting Forum on Housing and Inequality in San Diego on February 28. The forum will address the region's housing crisis using data.

[Learn More](#)

Recent Grants

Bouchard, Norma

International Studies Education Project of San Diego (ISTEP) - CSMP State
University of California Office of the President
\$26,482
College of Arts & Letters

De Sales, Fernando / Biggs, Trent

CNH-L: The sociohydrological system of a tropical forest frontier: land-climate-water feedbacks and farmer adaptation
University of Montana
\$369,057
College of Arts & Letters

Tummala, Lal

Testing Services for Police Traffic Radar and Laser Speed Measuring Devices
Department of California Highway Patrol
\$125,600
College of Engineering

Kassegne, Samuel

NSF Engineering Research Center for Neurotechnology (CNT)
University of Washington
\$75,711
College of Engineering

Ko, Eunjeong

SDSU/UCSD Cancer Center Comprehensive Partnership
University of California at San Diego
\$69,242
College of Health & Hum Services

McDaniels, Corinne

UCSD MCC: P30 CCSG Catchment Area Population Health Assessment
University of California at San Diego
\$137,667
College of Health & Hum Services

Reed, Elizabeth / Kiene, Susan M

Girls Invest: Mobile Technology and Economic Empowerment to Reduce Gender-based Violence among Adolescent Girls in Nigeria
Wellspring Philanthropic Fund
\$85,000
College of Health & Hum Services

Quimby, Robert

GROWTH: Global Relay of Observatories Watching Transients Happen
California Institute of Technology

\$7,500

College of Sciences

Lewison, Rebecca / Jennings, Megan K

Biology Connected landscapes for climate-resilient southern California communities and ecosystems

California Strategic Growth Council

\$1,790,000

College of Sciences

Gilbert, Paul / Elder, John

San Diego Resource Center for Advancing Alzheimer's Research in Minority Seniors

University of California at San Diego

\$152,404

Interdisciplinary Programs

Hushen, W Timothy

Student Support Services

DOD Space and Naval Warfare Systems Command

\$3,594

Office of Graduate and Research Affairs

Olevsky, Eugene

2018-2019 MESA Engineering Program (MEP)

University of California Office of the President

\$10,000

College of Engineering

Ries-Cornou, Stephanie K / Blumenfeld, Katina

Word retrieval in Spanish-English bilinguals after stroke

American Speech-Language-Hearing Foundation

\$25,000

College of Health & Hum Services

Reed, Elizabeth

An intervention to reduce risk factors for adolescent pregnancy

DHHS National Inst of Child Health and Human Development

\$225,750

College of Health & Hum Services

Buhi, Eric R

About Us: A Healthy Relationships Program for Vulnerable Youth

ETR Associates

\$250,000

College of Health & Hum Services

Ayala, Guadalupe X

Parents as Peer Interventionists in Treatment for Pediatric Weight Management

Seattle Childrens Hospital & Regional Med Ctr

\$35,739

College of Health & Hum Services

Soto, Osvaldo D

Advancing Significant California Mathematics Readiness Initiative

California State University Office of the Chancellor

\$60,000

College of Sciences

Guven, Halil

Georgia Regional Development Fund (GRDF): STEM Support, English Language Center and Student Life Activities

Millennium Challenge Account – Georgia

\$873,876

Georgia Campus

Petronzio, Vince

Radio Community Service Grant
Corporation for Public Broadcasting
\$496,076
KPBS

Petronzio, Vince

Television Community Service Grant
Corporation for Public Broadcasting
\$2,273,402
KPBS

Petronzio, Vince

Television Interconnection Grant
Corporation for Public Broadcasting
\$43,293
KPBS

Petronzio, Vince

Universal Services Support
Corporation for Public Broadcasting
\$5,167
KPBS

Mallios, Seth

GIS Data Maintenance Pauma
Pauma Band of Luiseno Indians
\$19,665
College of Arts & Letters

Fisher, Douglas

Educational Leadership Principal Preparation and Support 2017
The Stuart Foundation
\$200,000
College of Education

Park, Cynthia

Health Careers Opportunities Program / San Diego Regional Consortium
University of California at San Diego
\$135,000
College of Education

Liu, Xiaofeng

Direct measurement of all components of pressure-related terms in Reynolds stress transport
equation budget for a cavity shear layer flow
DOD Office of Naval Research
\$21,800
College of Engineering

Beyene, Asfaw

Industrial Assessment Centers, SDSU
US Department of Energy
\$232,224
College of Engineering

Tucker-Tatlow, Jennifer

APS 2019
California Department of Social Services
\$70,400
College of Health & Human Services

Mackersie, Carol

Self Fitting of Amplification: Methodology and Candidacy

DHHS National Inst on Deafness/Other Communication Disorders
\$516,319
College of Health & Human Services

Asmus, Lisa

Program Evaluation Services
San Diego County Health and Human Services Agency
\$30,000
College of Health & Human Services

McDaniels, Corinne

Development of Professional Education Program for Primary Care Practitioners On Sudden
Cardiac Arrest Prevention in Youth
Save a Life Foundation
\$54,500
College of Health & Human Services

Palacios, Antonio

Synchronization of Nonlinear Oscillators and Nonlinear Signal Reconstruction
DOD Space and Naval Warfare Systems Command
\$50,281
College of Sciences

Malcarne, Vanessa

Postdoctoral Fellow for SPIN-COACH
Jewish General Hospital
\$23,256
College of Sciences

Fuentes-Ferreiro, Suzanna

ELS Certification
AMCO International Education Services, LLC
\$48,325
Imperial Valley Campus

Sax, Caren

EFRC Plan Develop DDS
California Department of Developmental Services
\$294,998
College of Education

Olevsky, Eugene

Field-Assisted Sintering: Thermal and Non-Thermal Factors of Controlled Non-Equilibrium
US Department of Energy
\$150,000
College of Engineering

Meffe, Robert S

Til Death Do Us Part: Writers Residency Grant for Staged Reading
National Alliance for Musical Theatre
\$500
College of Professional Studies and Fine Arts

Larson, Lance

Defensive Cyberspace Operations Research, Development, Testing, Engineering, Integration,
Maintenance, and Production Support
Vector Planning & Services, Inc
\$468
College of Sciences

Larson, Lance

Security Specialist
Willdan Group Inc
\$10,000
College of Sciences

Yo estoy muy agradecido con las personas que luchan
por nosotros que Dios nos de mas fuerza cada familia
Yo tambien lla me falta dos semana para mi corte
Final 2 agosto 2018 gana o pierdo no se que va pasar
Yo tengo hijos lla grande por eso estoy muy preocupado

RESEARCH.SDSU.EDU | @SDSURESEARCH

The footer image this week is of a letter from an asylum seeker. Such letters are being archived by SDSU professors.