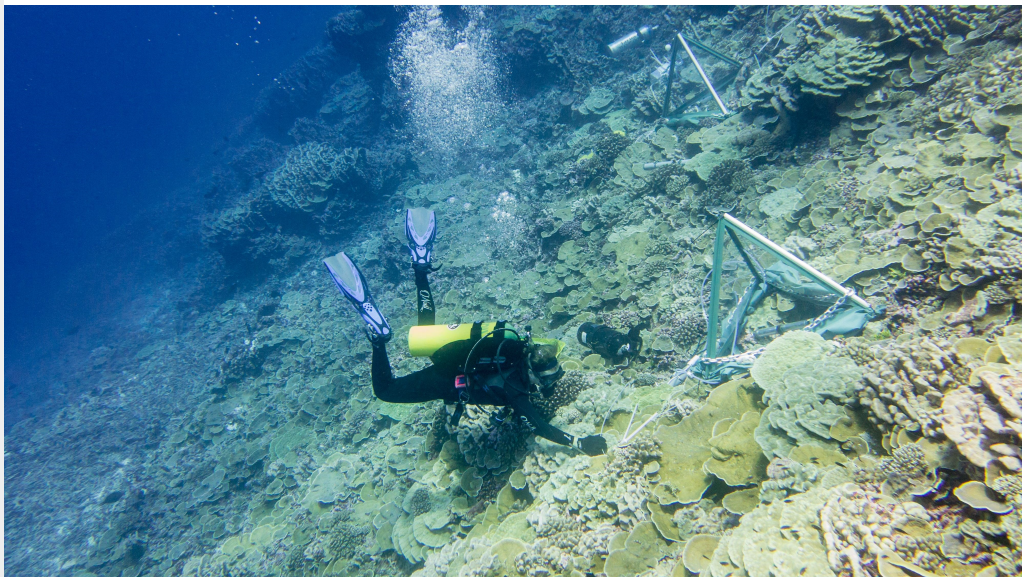


## Astronomers Discover New Planet in Kepler-47

Astronomers have found a third planet in the Kepler-47 system, securing the system's title as the most interesting of the binary-star worlds. Using data from NASA's Kepler space telescope, a team of researchers, led by SDSU astronomers, detected the new planet orbiting between two previously known planets. [Read more.](#)



## Microbes Surrounding Coral Reefs Change in Synchrony

SDSU scientists and collaborators discovered that bacteria present in the water overlying dozens of coral reefs changed dramatically during the night, and then

returned to the same daytime community as observed the morning before. The changes were synchronized across reefs separated by hundreds of miles. [Read more.](#)



## From India to SDSU: A New Shark Genome

Using a tiny tissue sample collected from one of the largest fishing ports in India, a SDSU laboratory has developed a detailed genetic profile of a vulnerable shark species—a step that could prove useful in future conservation efforts. [Read more.](#)

## In the News



### Handheld DNA tester can quickly identify illegal shark fins

*National Geographic* reports that SDSU researchers are the first to use a genetic sequencing device to fight wildlife crime.



### How seals took to the seas

*The New York Times* looks at research by a SDSU student that analyzes the bones of ancient and contemporary seals. The study posits that a particular biting style helped seals move into the oceans.





### The border guards you can't win over with a smile

The *BBC* talks to business professor Aaron Elkins about Avatar, a screening system he invented that could soon be working with real-life border agents.



### Having a good relationship with your boss improves well-being

*Thrive Global* considers SDSU research that suggests ethical leaders can lower stress, improve well-being and strengthen work performances.

## Featured Video

Biology professor **Nick Barber** is working to save one of the most endangered ecosystems on the planet: America's tallgrass prairie. In research supported by the National Science Foundation, Barber studies how to restore the prairie and support the biodiversity of the plants, animals, and microorganisms that live there.



Research Horizons: SDSU Ecologist Works to Save Disappearing American Prairie

## Announcements

ZIP Launchpad, SDSU's start-up incubator, is accepting applications from students, faculty and staff looking for help refining innovative ideas and considering launching a start-up.

[Learn More](#)

CSU I-Corps has two opportunities for researchers interested in

biotechnology. These courses allow participants to grow their professional network and explore entrepreneurial opportunities that build on basic research. The 2019 Summer Sprint is a week-long immersive workshop at SDSU in June, and the Fall 2019 Short Course is a semester-long learning program for research teams. Applications are due May 6.

[Learn More](#)

## Recent Grants

Perez, Ramona  
SDSU/Tinker Foundation Field Research Grants for Latin America  
Tinker Foundation Inc  
\$10,000  
College of Arts & Letters

Johnson, Joseph F  
Professional Development for Kansas City Public Schools - NCUST  
Kansas Learning Network  
\$179,550  
College of Education

Park, Cynthia  
SDUSD Pathways Tutoring Program  
San Diego Unified School District  
\$102,497  
College of Education

Schlagel, Rachel H  
Clinic for Child and Youth Psychiatry (CCYP) Evaluation  
University of California at San Diego  
\$18,904  
College of Education

Kumar, Sunil  
Quality-of-Autonomy (QoA)-Oriented and QoS-Aware Transport and Routing Protocols for  
Contested Airborne Swarm Networks  
DOD Air Force Research Laboratory  
\$350,000  
College of Engineering

Olevsky, Eugene  
Math, Engineering, Science Achievement (MESA) MESA Schools Program (MSP)  
University of California Office of the President  
\$180,000  
College of Engineering

Schmitz-Weiss, Amy C  
Building Interdisciplinary Education Curriculum between Science and Journalism Educators  
Online News Association  
\$15,000  
College of Professional Studies & Fine Arts

Appleyard, Bruce  
A Smart Growth Calculator for the Future of California's Corridors, Stations and Complete Street  
San Jose State University Foundation  
\$76,574  
College of Professional Studies & Fine Arts

Sussman, Mark  
Resolving Myocardial Regeneration by Tracking Commitment of c-Kit+ cells-Echeagaray-  
Bredesen

DHHS National Heart Lung and Blood Institute

\$76,889

College of Sciences

Salamon, Peter

Autonomous Behavior Guided by Invariant Imaging in Broad Band Infra-Red

DOE Oak Ridge Institute for Science and Education

\$13,000

College of Sciences

Gallo, Linda

Dulce Digital-ME: An Adaptive Health Intervention for Underserved Hispanics with Diabetes

Scripps Research Institute

\$186,110

College of Sciences

Gallo, Linda / Roesch, Scott

Medical Assistant Health Coaching for Diabetes in Diverse Primary Care Settings

Scripps/Whittier Institute for Diabetes

\$305,764

McGuire, Kathleen

Efficacy, Immune Mechanism(s), and Pharmacokinetic/Biodistribution Properties of Vaxiion's

Investigational Minicell Product Intended for use in Bladder Cancer

Vaxiion

\$15,056

College of Sciences

Gallo, Linda / Talavera, Gregory / Roesch, Scott

Mi Puente: My Bridge to Better Cardio-Metabolic Health and Well-Being

Scripps/Whittier Institute for Diabetes

\$225,064

Interdisciplinary Programs

Hushen, W Timothy

Student Support Services

DOD Space and Naval Warfare Systems Command

\$12,865

Graduate and Research Affairs

Levitt, Risa

Religious Studies

Visiting Israeli Professor Israel Institute

\$63,468

College of Arts & Letters

Schulze, Mathias / Brown, Christopher P

Every Student Succeeds Act - ESSA

University of California Office of the President

\$34,200

College of Arts & Letters

Lamb, Lisa / Soto, Melissa M

San Diego Math Project - ESSA

University of California Office of the President

\$32,438

College of Education

Pumpian, Ian / Sax, Caren

Creative Support Alternatives: Independent Living Services Program 2019

Valley Mountain Regional Center

\$140,661

College of Education

Huang, Ke

Optimization of Semiconductor Manufacturing Process Based on Data Mining

Innophase Inc.  
\$27,706  
College of Engineering

Kinoshita, Alicia M  
Watershed Modeling of the San Diego River and Tijuana River Watersheds  
Southern California Coastal Water Research Project  
\$39,180  
College of Engineering

Talavera, Gregory  
Cardio-Metabolic Risk in Multi-Ethnic Physical Activity & Sedentary Behavior Study  
Albert Einstein College of Medicine  
\$28,479  
College of Health & Human Services

Buono, Michael  
Development of a Regression Equation Using Exercise Heart Rate Responses in Thermoneutral  
and Hot Environments  
Leidos Inc  
\$109,753  
College of Health & Human Services

Min, Jong Won  
Title IV E Bachelors of Social Work Programs  
University of California at Berkeley  
\$287,278  
College of Health & Human Services

Min, Jong Won  
Title IV E Masters of Social Work Programs  
University of California at Berkeley  
\$2,639,482

Hoh, Eunha  
Tobacco smoke exposure analysis in breast milk at NICU  
University of Texas Health Science Center at Houston  
\$4,500  
College of Health & Human Services

Lipscomb, Scott D  
Southern California Arts Project (NCLB)  
University of California Office of the President  
\$75,500  
College of Professional Studies & Fine Arts

Lewison, Rebecca  
California Least Tern Breeding Survey 2018  
California Department of Fish and Wildlife  
\$17,500  
College of Sciences

Cripps, Richard M  
Genetic, molecular and computational analysis of MEF2 function in Drosophila myogenesis  
DHHS National Institute of General Medical Sciences  
\$252,300  
College of Sciences

Mueller, Ralph Axel  
The Autistic Brain over 45: The Anatomic, Functional, and Cognitive Phenotype  
DHHS National Institute of Mental Health  
\$669,916  
College of Sciences

Barlow, Jessica

Speech Sound Disorder in Young Bilingual Children- P. Combiths  
DHHS National Inst on Deafness/Other Communication Disorders  
\$33,877  
Academic Affairs

Hushen, W Timothy  
Student Support Services  
DOD Space and Naval Warfare Systems Command  
\$5,663  
Graduate and Research Affairs

Bouchard, Norma  
Confucius Institute  
San Diego County Auditor and Controller  
\$10,000  
College of Arts & Letters

Sax, Caren  
Iowa Department for the Blind CSNA  
Iowa Department of Administrative Services  
\$49,147  
College of Education

Chung, Y Barry  
International Studies Education Project of San Diego (ISTEP) - NCLB  
University of California Office of the President  
\$20,000  
College of Education

Youssef, George  
Integrated Multifunctional 3D-Printed Space Structures  
NASA Jet Propulsion Laboratory  
\$18,499  
College of Engineering

Lu, Ping Aerospace  
Integrated Advanced Entry and Powered Descent Guidance for Human Mars Missions  
National Aeronautics and Space Administration  
\$950  
College of Engineering

Quintana, PJE  
Measuring and Reducing Exposure to Thirdhand Smoke  
California Tobacco Related Disease Research Program  
\$373,240  
College of Health & Human Services

Talavera, Gregory  
Persistent Organic Pollutants, Endogenous Hormones and Diabetes in Latinos  
University of Illinois  
\$3,443  
College of Health & Human Services

Helm, Jonathan  
Multitrait-Multimethod Analyses for the Social Sciences  
Albert & Elaine Borchard Foundation Inc  
\$35,000  
College of Sciences

Zahner, William  
CAREER: Fostering Productive and Powerful Discussions among Linguistically Diverse Students  
in Secondary Mathematics  
NSF Directorate for Education and Human Resources  
\$197,566  
College of Sciences

Ponomarenko, Vadim  
REU Site: San Diego State University Mathematics Research Experience for Undergraduates  
National Science Foundation  
\$345,600  
College of Sciences

Zink, Thomas A  
Post-fire Restoration of the Del Cerro Reach of Alvarado Creek Smoke Tree  
San Diego River Conservancy  
\$910,709  
College of Sciences

Fuentes-Ferreiro, Suzanna  
ELS Certification  
AMCO International Education Services, LLC  
\$30,900  
Imperial Valley Campus

Hushen, W Timothy  
Student Support Services  
DOD Space and Naval Warfare Systems Command  
\$77,190  
Graduate and Research Affairs

Hushen, W Timothy  
Student Support Services  
DOD Space and Naval Warfare Systems Command  
\$45,285  
Graduate and Research Affairs

Schulze, Mathias  
Language Training Center  
Institute of International Education  
\$31,000  
College of Arts & Letters

Sax, Caren  
E/Rehab Website Upgrade, Hosting and Maintenance  
Nevada Department of Employment Training and Rehabilitation  
\$1,287  
College of Education

Johnson, Joseph F  
A-PLUS Inspire Charter Schools  
Inspire Charter Schools  
\$175,000  
College of Education

Johnson, Joseph F  
KCSOS School & District Leadership Support  
Kern County Superintendent of Schools  
\$7,497  
College of Education

Johnson, Joseph F  
CGEP Statewide Office ESSA  
University of California Office of the President  
\$135,887  
College of Education

Schell, Emily  
Global Education for History-Social Science  
San Diego County Office of Education  
\$3,000



Hoh, Eunha  
Assessing Marine Endocrine Disrupting Chemicals in the Critically Endangered California  
Condor: Implications for Reintroduction to Coastal Environments  
California Sea Grant College Program  
\$60,357  
College of Health & Human Services

Min, Jong Won  
"Masters in Social Work Scholarship Program  
Price Philanthropies Foundation  
\$47,956  
College of Health & Human Services

Barber, Nicholas  
Extending a globally unique long-term beetle survey in restored and remnant tallgrass prairie  
Friends of Nachusa Grasslands  
\$2,520  
College of Sciences

Holcomb, Phillip J  
Evaluating the precision of newly learned orthographic representations (Fellowship - G. Meade)  
Language Learning  
\$2,000  
College of Sciences

Riley, Edward  
8th International Conference on Fetal Alcohol Spectrum Disorder  
DHHS National Institute on Alcohol Abuse and Alcoholism  
\$35,000  
College of Sciences

Hushen, W Timothy  
Student Support Services  
DOD Space and Naval Warfare Systems Command  
\$22,002  
Graduate and Research Affairs



[RESEARCH.SDSU.EDU](https://research.sdsu.edu) | [@SDSURESEARCH](https://twitter.com/SDSURESEARCH)

The footer image this week is of SDSU President Adela de la Torre during her April 11 investiture and inauguration.