

## Ph.D. Collaboration with UC Irvine Advances Computational Science

The degree program will train students to work across teams and disciplines to help solve critical problems. [Read more.](#)



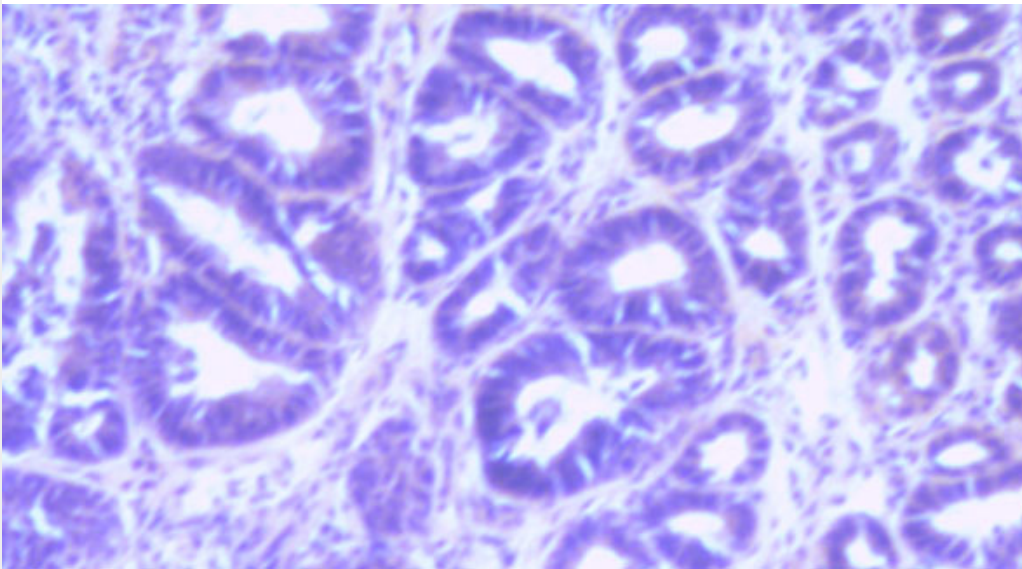
## New App Promotes Equity in the Classroom

Co-created by SDSU professor Daniel Reinholz, the app also helps teachers be more intentional when eliciting student participation. [Read more.](#) (Also, *listen* to his interview with KPBS)



## Whale of a Job: Slicing Into a Story of Evolution

A biology graduate student's research on prenatal humpbacks illustrates the great lengths to which researchers go to achieve small steps. [Read more.](#)



## SDSU Scientists Find New Way to Study Aggressive Form of Cancer

A persistent graduate student and fellow researchers have created a blueprint for scientists to study a cancer mutation in animal models. [Read more.](#)

**In the News**



### The Number of Women Directing Top Hollywood Films Declined

*Time* magazine looks at SDSU's annual Celluloid Ceiling report, which found the number of female directors declined in 2018.



### Turret Spiders Launch Sneak Attacks From Tiny Towers

In a captivating video, *KQED* looks at research by SDSU professor Marshal Hedin and colleagues that uncovers some of the mysteries of the California turret spider.



### The Administration is Driving up Citizenship Applications

*The Economist* cited research co-authored by SDSU professor Catalina Amuedo-Dorantes that found tougher immigration enforcement increased the likelihood that a legal permanent resident would start the naturalization process.



### SDSU researchers blindfold rattlesnakes to study night navigation

Fox 5 San Diego reports on an SDSU project to study which senses a rattlesnake uses to move in darkness.

## Featured Videos

Biology professor Luke Miller was recently in Alaska to study the impact of climate change on organisms that live in intertidal tide pools. He shared a few photos and a brief cellphone video with us, and we were able to make a short video for social platforms like Twitter and Facebook. The video was widely shared and viewed.

Faculty, when you're in the field, please consider sending media (images/video/audio) to our [communications director](#).



Video: Professor Luke Miller in Alaska



Research Horizons: Ijeoma Nwabuzor Ogbonnaya's Social Work

## Opportunities

ZIP Launchpad, SDSU's start-up incubator, is accepting applications from students, faculty and staff looking for help starting businesses.

[Learn More](#)

Consider being a judge for the 2019 Student Research Symposium. The event takes place on March 1 and 2, and some 500 students plan on participating. Email Director of Undergraduate Research [Lisa Kath](#) if you are interested.

[Learn More](#)

SDSU's Center for Communication, Health, & the Public Good is hosting an event on "Health Communication, Social Media, & Misinformation" at Scripps Cottage on February 7th at 3 p.m. Sylvia Chou, a program officer at the National Cancer Institute, will be presenting at the event. RSVP by January 31st.

[RSVP Here](#)

## Recent Grants

**Nara, Atsushi**

Encoding Geography: Building Capacity for and Broadening Participation in Spatial  
Computational Thinking with Geospatial Technologies  
Association of American Geographers  
\$99,991  
College of Arts & Letters

**Imazeki, Jennifer**

Transforming College Teaching: Statewide Implementation of the Faculty Learning Program  
University of California at Berkeley  
\$4,874  
College of Arts & Letters

**Mladenov, Natalie**

"WERF: Enhanced evaluation of the removal of contaminants of emerging concern in  
decentralized  
water reuse systems by non-targeted analysis"  
Water Research Foundation  
\$25,000  
College of Engineering

**Talavera, Gregory**

New York Regional Center for Diabetes Translation Research  
Albert Einstein College of Medicine  
\$33,566  
College of Health & Human Services

**Oren, Eyal**

A randomized cross-over clinical trial of unfiltered cigarettes  
California Tobacco Related Disease Research Program  
\$9,079  
College of Health & Human Services

**Torre, Peter**

HIV/AIDS Cohort Study (PHACS) Data and Operations Center (DOC)  
Harvard University  
\$24,647  
College of Health & Human Services

**Penn, Tanya E**

Kaiser Foundation Hospital - 2019 Community Health Needs Assessment  
Kaiser Foundation Research Institute  
\$35,000  
College of Health & Human Services

**Schiaffino, Melody K**

Characterizing the Quality of Care for Cancer Patients with Co-occurring Dementia/AD  
University of California at San Diego  
\$30,000  
College of Health & Human Services

**Quintana, PJE**

Impacts of Thirdhand Smoke on Public Health- TRDRP  
University of California at San Francisco  
\$14,021  
College of Health & Human Services

**Sinha, Usha**

Physics Role of the Extracellular Matrix in Age-Associated Force Loss: Integrating Imaging,  
Biochemistry and Multi-Scale Mesh-free Modeling  
University of California at San Diego  
\$48,449  
College of Sciences

**Larson, Lance**

Defensive Cyberspace Operations Research, Development, Testing, Engineering, Integration,  
Maintenance, and Production Support  
Vector Planning & Services, Inc  
\$459  
College of Sciences

**Lauer, Matthew An**

Multi-Scale Dynamics of Coral Reef Fisheries: Feedbacks Between Fishing Practices, Livelihood  
Strategies, and Shifting Dominance of Coral and Algae  
University of California at Santa Barbara  
\$165,583  
College of Arts & Letters

**Sax, Caren**

17/18 EFRC Spanish Phone Calls/Faxes & English Faxes  
San Diego/Imperial Counties Developmental Services Inc  
\$20,379  
College of Education

**Sax, Caren**

**2019 EFRC Spanish Phone Calls/Faxes & English Faxes**  
San Diego/Imperial Counties Developmental Services Inc  
\$79,092  
College of Education

**Mi, Chunting C**

Planning Grant: Engineering Research Center for Comprehensive Energy Storage Solutions in  
Electrified Transportation (CESSET) University of Michigan  
\$7,000  
College of Engineering

**Hooshmand, Shirin / Kern, Mark**

Effect of Dried Plum on Bone and Markers of Bone Status in Osteopenic men  
California Dried Plum Board  
\$65,000  
College of Health & Human Services

**McDaniels, Corinne**

MCC CancerDAT - Additional Indicators  
University of California at San Diego  
\$22,000  
College of Health & Human Services

**Zink, Thomas A**

Rancho Jamul Grass Farm Project  
California Department of Fish and Wildlife  
\$13,923  
College of Sciences

**Carper, Ruth A Psychology**

Characterizing topographically variable dysplasias in individuals with ASDs  
Simons Foundation  
\$167,272  
College of Sciences

**Reinholz, Daniel**

Departmental Action Teams: Sustaining Improvements in Undergraduate STEM Education  
Through Faculty Engagement  
University of Colorado Boulder  
\$215,603  
College of Sciences

**Oechel, Walter**

Satellite Data Driven Model Assessment of Landscape Variability and Environmental Controls on

the Arctic-Boreal Carbon Budget  
University of Montana  
\$20,000  
College of Sciences

**Hornberger, Steven / Popovic, Kevin R**  
Behavioral health services design thinking consultation  
San Diego County Health and Human Services Agency  
\$97,836  
Interdisciplinary programs

**Hushen, W Timothy**  
Student Support Services  
DOD Space and Naval Warfare Systems Command  
\$24,040  
Office of Graduate and Research Affairs

**Hushen, W Timothy**  
Student Support Services  
DOD Space and Naval Warfare Systems Command  
\$21,115  
Office of Graduate and Research Affairs

**Johnson, Joseph F**  
CGEP Statewide Office CSMP  
University of California Office of the President  
\$172,895  
College of Education

**Hooker, Steven P**  
The HOMBRE trial: Comparing two innovative approaches to reduce chronic disease risk among  
Latino men  
Stanford University  
\$17,304  
College of Health & Human Services

**Torre, Peter**  
Pediatric HIV/AIDS Cohort Study III (PHACS)  
Tulane University  
\$12,164  
College of Health & Human Services

**Castaneda, Sheila F**  
1/2 SDSU/UCSD Cancer Center Comprehensive Partnership  
University of California at San Diego  
\$51,780  
College of Health & Human Services

**Boothroyd, Arthur**  
A Realtime, Open, Portable, Extensible Speech Lab  
University of California at San Diego  
\$71,717  
College of Health & Human Services

**Larson, Lance**  
Defensive Cyberspace Operations Research, Development, Testing, Engineering, Integration,  
Maintenance, and Production Support  
Vector Planning & Services, Inc  
\$1,874  
College of Sciences

**Fuentes-Ferreiro, Suzanna**  
ELS Certification  
AMCO International Education Services, LLC  
\$11,455

Imperial Valley Campus

**Hushen, W Timothy**

Student Support Services  
DOD Space and Naval Warfare Systems Command  
\$9,983  
Office of Graduate and Research Affairs

**Kamper, David**

Impact of Nonsmoking Constraints on Tribal Casino Operations  
California Department of Public Health  
\$208,176  
College of Arts & Letters

**Bouchard, Norma**

Interactive Chinese calligraphy machine and Chinese bell set  
San Diego County Auditor and Controller  
\$56,000  
College of Arts & Letters

**Vasquez Urias, Marissa / Harris, Frank**

CCEAL - Napa Valley College  
Napa Valley College  
\$18,000  
College of Education

**Fisher, Douglas**

Educational Leadership  
University Principal Preparation Initiative 2018 – 2020  
The Wallace Foundation  
\$1,390,000  
College of Education

**Talavera, Gregory**

Hispanic Community Health Study/Study of Latinos (HCHS/SOL)  
DHHS National Heart Lung and Blood Institute  
\$1,306,551  
College of Health & Hum Services

**Asmus, Lisa**

Home to Health Program: Evaluation 2017 – 2020  
Family Health Centers of San Diego  
\$10,000  
College of Health & Hum Services

**Brodine, Stephanie**

NARCH Core  
Indian Health Council  
\$8,156  
College of Health & Hum Services

**Asmus, Lisa**

Strategic HIV Prevention Project Evaluation Services  
San Diego County Health and Human Services Agency  
\$19,500  
College of Health & Hum Services

**Martin, Estralita**

California State University Louis Stokes STEM Pathways and Research Alliance (CSU-LSAMP)  
(2018-2023)  
CSU Sacramento University Enterprises Inc  
\$45,250  
College of Sciences



**Olsen, Kim**

3D Regional Wave Propagation with Q(f) in East Asia for North Korea Nuclear Tests  
DOD Air Force Research Laboratory  
\$32,157  
College of Sciences

**Cranford, Ted**

Deciphering Mysticete Audiograms Using a Prepared Skull  
DOD Office of Naval Research  
\$182,041  
College of Sciences

**Shikuma, Nicholas**

Elucidating the Role of Tailocins in Microbes from the Human Gut  
DOD Office of Naval Research  
\$249,999  
College of Sciences

**Roch, Marie**

Using Context to Improve Marine Mammal Classification  
DOD Office of Naval Research  
\$437,257  
College of Sciences

**Zink, Thomas A**

Processing 2018 GSOB/PHHB Specimens from Detachment Fallbrook  
DOD Space and Naval Warfare Systems Command  
\$2,492  
College of Sciences

**Soto, Osvaldo D**

Discrete Math Project  
Gompers Preparatory Academy  
\$13,199  
College of Sciences

**Holland, Gregory P**

Increasing the Complexity of Life at Silica Nanostructured Interfaces  
National Aeronautics and Space Administration  
\$165,000  
College of Sciences

**Miller, Luke P**

Collaborative Research: Context-dependency of top-down vs. bottom-up effects of herbivores on marine primary producers  
National Science Foundation  
\$70,158  
College of Sciences

**Miller, Luke P**

Collaborative Research: Effects of Multiple Aspects of Climate Change on Marine Biodiversity and Ecosystem Functioning  
National Science Foundation  
\$92,028  
College of Sciences

**Johnson, Calvin**

Quantum Computing for Nuclear Matrix Elements for Tests of Fundamental Symmetries  
University of Wisconsin-Madison  
\$50,000  
College of Sciences

**Soto, Osvaldo D**

Discrete Math Partnership  
Vista Unified School District  
\$12,599

College of Sciences

**Francis, John D**

Small Business Enhancement Program FY 2019 Grant Application  
City of San Diego  
\$15,000  
Fowler College of Business

**Hushen, W Timothy**

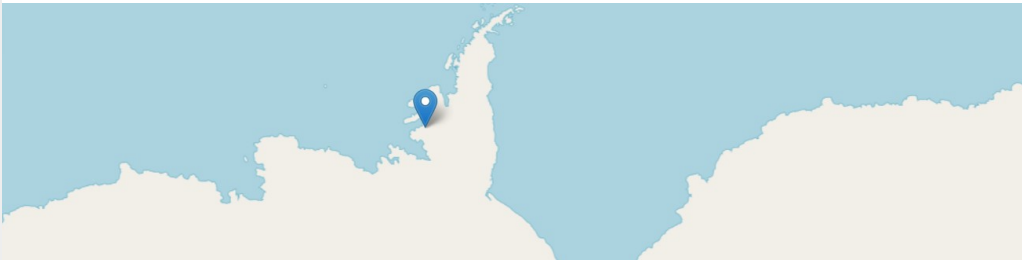
Student Support Services  
DOD Space and Naval Warfare Systems Command  
\$49,753  
Office of Graduate and Research Affairs

**Hushen, W Timothy**

Student Support Services  
DOD Space and Naval Warfare Systems Command  
\$57,915  
Office of Graduate and Research Affairs

**Hushen, W Timothy**

Student Support Services  
DOD Space and Naval Warfare Systems Command  
\$27,855  
Office of Graduate and Research Affairs



**RESEARCH.SDSU.EDU | @SDSURESEARCH**

The footer image this week is of the [Hushen Glacier](#), in honor of the late Tim Hushen - the glacier's namesake and longtime leader of SDSU's research advancement team.